

# ANNUAL REPORT

## 2015/2016





## **Our vision:**

To make tennis a part  
of every Aucklander's life

## **Our purpose:**

To create inspiring opportunities  
for all Aucklander's to engage  
with tennis

## **Our values:**

Passionate, professional,  
responsive, respectful









# Contents

- 4 From the Chair
- 6 From the Chief Executive
- 8 From the President
- 9 Vision and Strategic Plan 2016
- 10 Meet the Team
- 12 Sponsors & Partners
- 14 Year in Review
  - 15 2016 ASB Classic report
  - 17 Tennis in Clubs and Schools
  - 19 Growing our Junior Talent
  - 21 Umpires Association
- 24 Awards and Milestones
- 27 Facts and Stats
- 48 Corporate Governance
- 50 Financial Reports



# From the Chair

SIMON VANNINI

## REVIEW

Tennis Auckland has had another very successful year, and it gives me great pleasure to summarise some of the highlights. The Board feels that we are continuing to make great progress in pursuit of our vision to make tennis a part of every Aucklanders' life.

The key activities and achievements of Tennis Auckland are summarised in the report presented by our CEO, Brent Robinson. We were treated to some excellent tennis again in January, with the ASB Classic mens' and womens' tournaments providing Aucklanders with the opportunity to again experience truly world class tennis.

I was particularly pleased to attend late last year a function at which ASB Bank confirmed the extension of their sponsorship across both our mens' and womens' international tournaments. Having both tournaments being branded ASB Bank gives us the opportunity to work closely with ASB Bank to promote their brand and values in a consistent manner across the two week international tournament period and beyond.

Our operating surplus for the financial year ending 30 June 2016 was \$804,037, against the result of \$859,492 for the previous financial year ending 30 June 2015. This is a very strong result again, reflecting the hard work of all people across our organisation, and sets us up to be in a very sound financial position as we look towards our proposed facilities redevelopment.

## ASB ARENA REDEVELOPMENT

The Tennis Auckland Board has been working over a number of years to develop a strategy for the redevelopment of the ASB Tennis Arena facilities. This has involved working with our tournaments team, Auckland Council; our existing sponsors and partners; our committed and potential funders; and other supporters. Tennis Auckland has invested a significant amount in preliminary design and planning work, culminating in a resource consent being issued in January 2016 for the proposed redevelopment works.

All of the work done over the past couple of years has resulted in the Board recently committing to commencing the redevelopment project during 2017, which we anticipate will result in the upgraded stands and retractable roof being in place by 2019. While there is still some work to do to finalise the detailed designs and complete our funding programme, we are very excited that the completion of this redevelopment will result in truly world class facilities for our international tennis tournaments, as well as offering opportunities to bring other tennis activities to a wider audience at other times during the year.

## GOVERNANCE

It is important to acknowledge the efforts of our Board during the last year. We have Board subcommittees dealing with audit and risk, employment, and property (including the redevelopment project), which involves a significant time commitment by Board members during the year, and in particular the property subcommittee has been heavily committed to the redevelopment planning and discussions.

## ACKNOWLEDGEMENTS

The Board would like to acknowledge the work carried out by Don Cotter in his role as President since October 2015. Don has fully immersed himself in the President's role, and has been a valuable participant in Board meetings as we have worked with clubs and tennis groups and supporters. Don has in particular made an effort to get around clubs and attend events on behalf of Tennis Auckland during the year which has been very much appreciated by the Board.

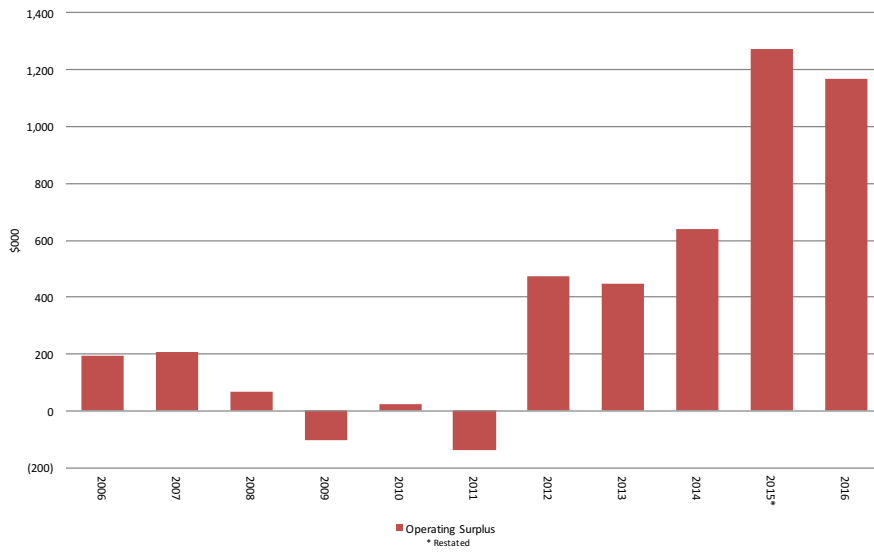
We would like to thank our CEO Brent Robinson and his team, for continuing to deliver fantastic results for our organisation, while focussing on effective and efficient delivery.

We are grateful to our family of sponsors, who have continued to support our activities for a number of years. The contributions made by our sponsors, both financial and non-financial, enable us to achieve some significant opportunities and profile for tennis in the Auckland region, which is an important part of our strategy.

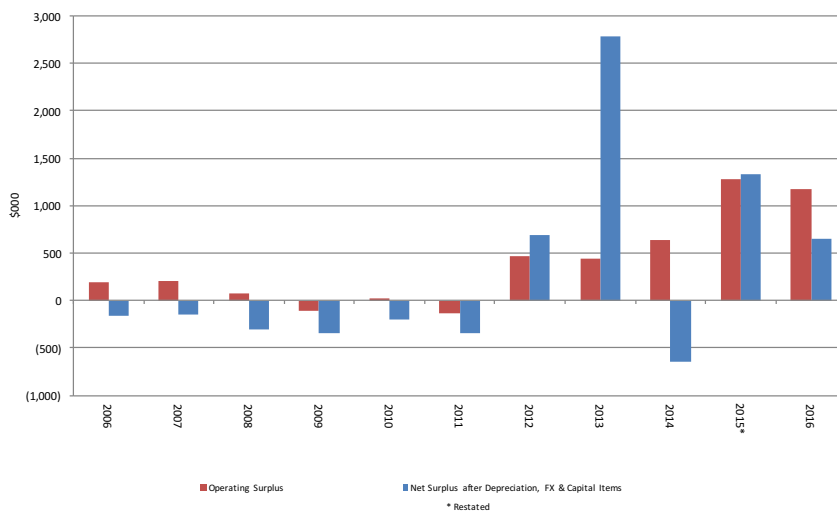
Finally, we would like to thank the many volunteers who assist at both the club level and at domestic and international tournaments, none of these activities could continue without the efforts of these numerous individuals.

# KEY FINANCIAL PERFORMANCE INDICATORS

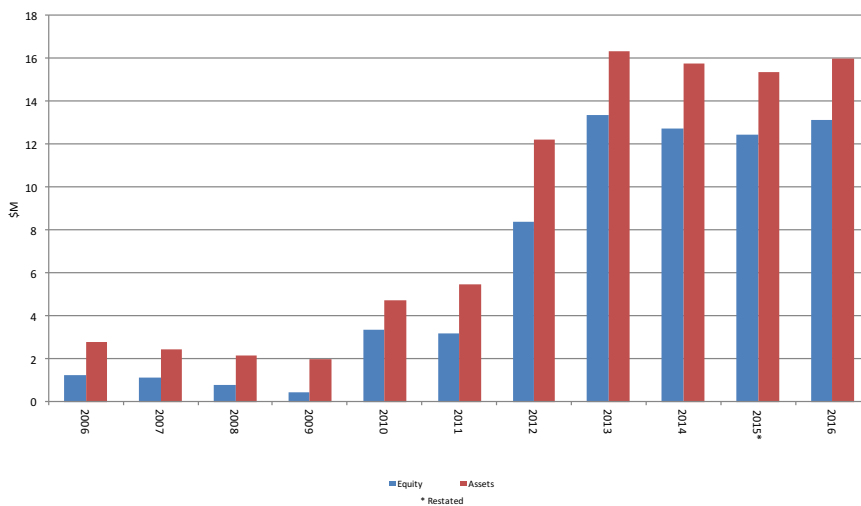
## Operating Surplus



## Net Surplus/Operating Surplus



## Equity and Total Assets







# From the Chief Executive

BRENT ROBINSON

The 2015/16 year is one that everybody involved with tennis in Auckland should look back on with pride. After good progress in 2014/15 we have continued to focus on supporting our clubs, facilities, tournaments and player development, all the while delivering a very strong financial result. While there is a lot of work still to do we are moving positively toward our goal of making tennis a part of every Aucklanders' Life.

## MEMBERSHIP AND PARTICIPATION

One of the real highlights of 2015/16 was the establishment of a team focused on Clubs, Community, Participation and Places (CCPP). A joint Auckland-wide initiative with Tennis Northern, this has enabled us to add dedicated resource focused on Participation and Facilities Planning to the fantastic work within Clubs and Schools already being delivered by Mark Lewis and his team.

Nick Jacques joined this team as Participation Coordinator, and in this role Nick has a dedicated focus on using the National Programs (Hot Shots, Cardio Tennis and Tennis Xpress) to drive participation in tennis across the city. The National Programs will be the key tool that Tennis Auckland will use to grow participation; many clubs have embraced this opportunity and I strongly encourage all clubs and their coaches to use both Nick and the National Programs as a key resource in bringing more people to your clubs.

We listened to feedback that it was time to look at changing up the Scarbro Caro Bowl and undertook a review of our elite club competition. This has resulted in a range of changes that will be rolled out in 2016/17 and it will be fascinating to see if Blockhouse Bay men and Sunnyhills women can defend their titles under the new format. I would like to congratulate Orakei Tennis Club – awarded Club of the Year at this year's Tennis Auckland Awards. Orakei were a pilot partner in the Club Growth Program started 3 years ago and are a fantastic example of a club that confronted some big challenges, made a plan and some brave decisions, and have been rewarded with some fantastic results.

Our program of club support continued including forums on a range of subjects important to the success of clubs. The Health and Safety evenings were particularly well attended and it is important that all of us continue to put a focus on ensuring we provide a safe environment for the public at our centres and clubs. We realise this can be a complex area and are here to help in any way we can.

## EVENTS

In a significant evolution for the January tournaments, the Men's and Women's events came together under the ASB Classic banner for the first time. A future star of the game in Sloane Stephens triumphed in the women's week, while the courage shown by Jack Sock in taking the court for the final against Roberto Batista Agut in spite of severe illness won over the sell-out crowd despite him having to eventually withdraw. The new fan area – The Serve – in the Domain was a fantastic addition that opened up the ASB Classic to even more fans. This was a highly complex initiative and I would like to thank Mellany Mann for all her work in bringing this to life. The small but dedicated tournament team, Tennis Auckland staff and the hundreds of volunteers do an incredible job in delivering what is in my mind the best annual sporting event in New Zealand.

The New Zealand Championships had the semi-finals and finals at the ASB Tennis Arena for the second year, enabling a live broadcast by Sky Television. This is a fantastic opportunity for the sport and I ask you all to support this again in December to ensure we continue to grow this opportunity

## FACILITIES

We continue to invest in tennis facilities, including the continuation of the resurfacing program at the Scarbro Tennis Centre. This year all indoor courts were resurfaced and we are hopeful of completing this program in the coming year.

You will recall that last year we completed the Auckland Tennis Facilities Study, and this year as part of the CCPP initiative we committed resource to bring this strategy to life. David Guy has been contracted by Tennis Auckland and Tennis Northern to undertake this work, which will in the main consist of heading the Regional Facilities Working Group (RFGW). This group consists of Tennis, Auckland Council and Active Sport personnel who together will deliver a long term plan for tennis facilities across Auckland. The reality is that funders now want to understand such long term planning before committing money to any facilities, so this is a critical piece of work for our sport.

Resource Consent has been secured for the redevelopment of the ASB Tennis Arena. The ASB Classic is the showpiece for tennis in New Zealand and a critical enabler for the rest of the sport. The age and condition of parts of the



ASB Tennis Arena mean that upgrading the facility is essential if we are to future proof these events. We continue to make exciting progress on this critical project and we will need the support of the entire tennis community.

## PERFORMANCE AND PLAYER DEVELOPMENT

In what was a fantastic achievement, Auckland's best under 12, 14 and 16 players successfully defended the Champion Region Trophy at the National Junior Teams Event.

Congratulations to all the players, coaches and parents who put so much time into preparing and competing at this event. The Scarbro Tennis Centre will again host the Under 12 and 14's team and individual nationals in January and I would encourage you to get along and support our best and brightest as they take on the rest of the country.

In addition to providing a high quality squad program we have endeavoured to work far more closely with the other coaches around Auckland who are working with the region's most promising juniors. We will have the best chance of our junior players maximising their potential if our network of coaches are working together, and Tennis Auckland will continue to take a lead in this area.

## ORGANISATIONAL EXCELLENCE

2015/16 again sees us report an excellent operating surplus for the year. This is a testament to all of our managers and their teams. To a person they have delivered strong results in a financially sustainable manner. Delivering and growing sport in New Zealand can be a financial challenge and it is therefore imperative that we use the positive years to build our equity and future-proof the sport.

It is critical to thank our sponsors and funders, without whom we could not deliver the programs and events that grow tennis in Auckland. In particular our partners at Aktive and the Regional Sports Trusts are critical in enabling us to introduce children to tennis in schools, while Four Winds, Infinity Trust, NZCT and the Lion Foundation are key enablers of our range of participation, coaching and tournament initiatives including Hot Shots, Junior Teams Events and the Super City Academy.

I need to highlight and thank the enormous show of faith from ASB Bank in stepping up as naming rights sponsor across the fortnight in January, and also thank Heineken not only for their years of support to the Mens event but also for their renewed sponsorship of the fortnight. We remain very thankful to Scarbro Construction for their support of both the Caro Bowl competition and the Scarbro Tennis Centre at Merton Rd.

A huge thank you to each and every one of you who so generously give your time to tennis. Be it at your clubs, volunteering at the ASB Classic or simply supporting your children, our sport would be all the worse off without your commitment.

I would like to acknowledge the Tennis Auckland Board, who continue to freely offer their time and expertise for the betterment of tennis in our region. Tennis Auckland has a range of responsibilities and stakeholders more complex than most, and we are extremely fortunate to have the skills that our board members bring. I would also like to thank Don Cotter who has been very supportive in his role as President.

Lastly a huge thank you to the team at Tennis Auckland; they are a small but incredibly passionate group of tennis lovers who want nothing more than to see the sport flourish. I would also like to thank their families; working in sport is a privilege but requires the commitment of many hours outside the norm. As a team we will continue to challenge ourselves to do everything we can to grow the game of tennis in the Auckland region.



## From the President

DON COTTER

**As your President for the 2015-2016 season, it is my pleasure to comment on my observations of what has been another particularly successful and active year for Tennis Auckland and its affiliated member clubs.**

As I complete my term I believe tennis in Auckland is in a great space with a healthy heart. I am encouraged by the level of good governance being provided by an extremely competent and multi skilled Board. Delivery of the Strategic Plan being led by the CEO Brent Robinson and his senior management team can only be to the benefit of all Tennis Auckland stakeholders.

With the ASB Classic fortnight firmly entrenched as one of New Zealand's favourite sporting events, the spin offs from its profile and success provides Tennis Auckland with a wonderful opportunity to grow our game at all levels of participation, and I am confident that with the people, programmes and processes currently in place we can all feel positive and optimistic going forward. I was particularly impressed to hear Club and School Manager Mark Lewis report that 11,000 youngsters from 64 different schools had taken part in Hot Shots (a fully funded introduction to the tennis programme) which was his biggest ever uptake. Clearly our very supportive funding agencies see Tennis Auckland as a particularly capable deliverer of this programme which also involves supporting clubs and coaches.

While tennis in Auckland, at the top level, is now run in a professional and corporate manner, its success will always rely heavily on the countless volunteers who deliver so much at grass roots, club and major event level. It has been a real pleasure for Margaret and I to meet the passionate people doing so much for the good of the game and

importantly their local communities and we thank you all sincerely. With clubs nowadays facing challenges on so many fronts, it is gratifying to see the seriously good work being done by volunteer committees to ensure their club's prosperity. It is also especially pleasing to see the take up by many clubs of the suite of resources and workshops being offered by Tennis Auckland. My congratulations to all clubs and individuals recognized at the Tennis Auckland Awards evening which has clearly become a highlight of the year for many.

On a sad note, in January this year, we lost Peter Gardner (President 2002-2003) and Life Member Don Moore (President 1982-83). Both will be remembered for their great contribution to a sport they loved dearly. On a much happier note the elevation of Pam Sowter to Life Membership was seen by all longstanding Auckland tennis enthusiasts as appropriate recognition for the outstanding contribution she has made over so many years.

The next few years promise to be challenging and exciting particularly around the ASB Tennis Arena redevelopment. I am in no doubt that the successful outcome of this major project will ensure the growth of our great sport and underpin a bright future for tennis in Auckland.

I have thoroughly enjoyed my time as your President and leave buoyed by what lies ahead for Tennis Auckland. My best wishes to incoming President Chris Day.

# Tennis Auckland Vision and Strategic Plan 2016

## Tennis Auckland - Strategy Overview

**Vision** To Make Tennis A Part of Every Aucklanders Life

**Purpose** To Create Inspiring Opportunities for all Aucklanders to Engage with Tennis

**Strategic pillars**

Participation & Membership	World Class Intl Tournaments	Player Development	Organised Play for All	Facility Development	Organisational Excellence
More people playing tennis with healthy clubs and children at the heart of annual growth	Financially sustainable world class tournaments that are loved by players, sponsors, customers and volunteers	Development pathways for all players that embrace the coaching network	Competitions tournaments and formats that meet the needs of all players	Provide financially stable facilities in the right places to meet current and future needs of the game	Become a leading RSO through financial security, strong governance, talented people and constructive culture

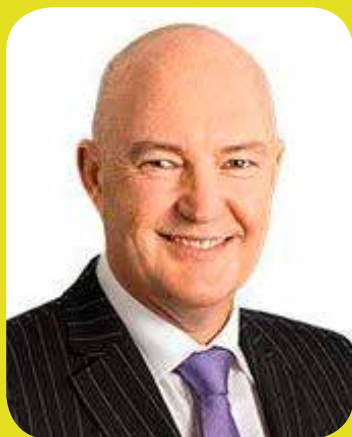
**Values** Passionate      Selfless      Relentless      Respectful





# Meet the Team

## BOARD OF DIRECTORS



*Chairman – Simon Vannini*



*Deputy Chairman – Howard Lewis*



*Director – Elizabeth Coutts*



*Director – John McGill*



*Director – Garry Scarborough*



*Director – Amanda Hopkins*



*Director – Clare Morgan*



*Director – Tony Gardner*

## TENNIS AUCKLAND STAFF:

Chief Executive	Brent Robinson
Finance and Administration Manager	Kate Jackson
Tournament and Commercial Director	Karl Budge
Event Operations Manager	Mellany Mann
Event Operations Coordinator	Jess Jones
Marketing and Commercial Manager	Julia Atkinson
Domestic Tournament and Centre Manager	Simon Crozier
Clubs and Schools Manager	Mark Lewis
Regional Performance Manager	James Greenhalgh
Events and Executive Co-ordinator (left Feb 2016)	Rebecca Eason
Office Administrator	Marguerite Bovaird
Interclub Coordinator	Nyree Smith
Interclub Coordinator (part time)	Deirdre Gibbs
Facilities Projects Manager (contractor)	David Guy
Groundsman - ASB Tennis	Peter Denton
Groundsman – Scarbro Tennis Centre (retired June 2016)	Brian Nixon

## OFFICERS

### PATRON:

His Excellency, Lt Gen The Rt Hon Sir Jerry Mateparae, GNZM, QSO Governor-General of New Zealand

### PRESIDENT:

Mr Don Cotter

### IMMEDIATE PAST PRESIDENT:

Ms Judy Bent

### VICE PRESIDENT:

Mr Chris Day

### LIFE MEMBERS:

Mrs Joy Charman	Mr Jeff Robson MBE
Mr Don Moore	Mr Peter Wilson ONZM
Mr Guy Nash	Mr Roger Harvey
Mrs Colleen Edmonds	Mr Tom Kiely MBE
Mr Alan White	Mr Peter Thompson
Mr Barry Ryder	Mr Alan Chester ONZM
Mrs Pam Sowter	

## TENNIS AUCKLAND ACTION COMMITTEES:

### CENTRE JUDICIARY COMMITTEE:

Mr Alan Gluestein  
Mr Peter Stokes  
Mr Elliot Burcher  
Mr John Barry  
Mr Tim MacAvoy  
Mr Chris Day  
Mrs Julia Sim

### CLUB ADVISORY AND SUPPORT COMMITTEE:

**Chairperson** – Mr Paul Harvey  
Mr Donald Sim  
Mr Guy Nash  
Mrs Angela Hart  
Ms Judy Bent  
Mrs Carol Bourne

### EMERITUS COMMITTEE:

**Chairperson** – Mr Roger Harvey  
Mrs Pam Sowter  
Mrs Jill Bignell  
Mr Kevin Long  
Mr Alan White

### SELECTORS:

**Convenor** – Mrs Angela Swinkels  
Mr Nigel Allen  
Mr James Greenhalgh

### COMPLAINTS COMMISSIONER:

Alex Metzger

### AUDITOR:

KPMG

# Sponsors and Partners

Tennis Auckland is proud to be supported by the following companies and organisations





ASB CLASSIC SPONSORS

# ASB



# Year in Review



# 2016 ASB Classic report

KARL BUDGE – TOURNAMENT DIRECTOR



'One name – twice the tennis' became the theme for 2016 as a new era for our international events was ushered in. ASB Bank became the title sponsor of both the Women's and the Men's events forming a two week long ASB Classic. And what a two weeks it was. Record crowds, domestic broadcast audience and media coverage was matched by a world class line-up of players and a new entertainment precinct serving up a whole new way to enjoy the ASB Classic.

On the court we assembled the best line up of players in the open era. The Women's event boasted three former World Number Ones, three Grand Slam Champions and the two most recent ASB Classic champions. Headlined by Venus Williams (7), Caroline Wozniacki (16) and Ana Ivanovic (17) the field also included rising star Sloane Stephens (30) as well as kiwi number one Marina Erakovic.

The Men's event had never seen before such depth, with 14 players ranked inside the World's top 30 and two inside the top ten. Flamboyant Frenchman, Jo-Wilfried Tsonga (10) in his first appearance in Auckland was joined by David Ferrer (7), John Isner (11) and Kevin Anderson (12). Exciting youngsters Roberto Bautista Agut (25) and Jack Sock (26) were joined by two Kiwis in the main draw (Michael Venus and Finn Tearney).

A record 64,000 fans came through the gates during the two weeks, almost 6,000 up on our 2015. Fans were tuning in at home also with a combined audience of 991,520 watching the coverage on Sky Sports. Media coverage of the event dominated the headlines with a 97% increase in media value from 2015 to deliver a staggering \$16,865,800 in PR coverage whilst engagement on social media also reached new levels.

Away from the courts, the new entertainment precinct dubbed "The Serve" gave fans a great place to watch all of the action on a big screen, grab a bite to eat from The Grill by Sean Connolly, enjoy a refreshing beverage from the Heineken Baseline Bar or SOHO Wine Bar and listen to some of New Zealand's most prominent musicians live on the sound stage. The Serve was full throughout the two weeks and enabled a new entertainment offering to be built on year on year.

2016 was an exciting year for our family of sponsors. The transition of ASB Bank becoming title sponsor across both weeks whilst retaining Heineken as a major sponsor underpinned a great year that also included welcoming Godfrey Hirst as a major partner, Emirates as our official airline and Adidas as the official apparel supplier to the Events.

The growth of the ASB Classic over recent years was aptly celebrated through the awarding of the 'Best International Tier Event' as voted by the WTA players for the second year in a row. The ASB Classic was also voted 'Best Fan Experience' by the ATP Tour also for the second year in a row whilst at home we were a finalist for Best Major Event at the New Zealand Event Association Awards.

I would like to take this opportunity to thank the hard work that goes in to making this New Zealand's best annual event by the Tennis Auckland team, our volunteers, ball kids and linespersons.

A thank you also to our family of sponsors headed by ASB Bank, BMW and Godfrey Hirst.

Finally, a huge congratulations to our 2016 Champions, Sloane Stephens and Roberto Bautista-Agut. We look forward to the 2017 ASB Classic going to all new levels.







# Delivering Tennis in Clubs and Schools

MARK LEWIS – CLUBS & SCHOOLS MANAGER

## TENNIS HOT SHOTS AT SCHOOLS

A record number of schools participated in Tennis Hot Shots Programmes in Auckland this year. A total of 64 schools received fully or mostly funded 4 week programmes providing tennis opportunities for over 11,000 primary school aged children. The feedback from the schools was overwhelmingly positive with many of them participating for the 3rd or 4th time in recent years. All programmes were delivered by registered Tennis Hot Shots coaching teams from tennis clubs located in close proximity to each participating school.

Funding for these programmes was provided by:

- The Four Winds Foundation
- Sport Auckland
- Sport Waitakere
- Counties Manukau Sport
- Aktive Auckland Sport and Recreation

Without this funding support, Tennis Auckland would not be able to provide these opportunities for children to be introduced to the game so we are incredibly appreciative for every dollar we receive – and so are the 11,000 plus participant children.



THE HOT SHOTS PROGRAMME

## CLUB SUPPORT

It has been a busy year for club support, highlighted by:

- The launch of the Club Zone section on the Tennis Auckland website
- The development and launch of the online Club Assessment platform in Club Zone
- The launch of a Resource Suite providing information for clubs about volunteers, coaching, membership and marketing.
- A series of workshops and information sharing presentations were delivered by Tennis Auckland as an integral component of our Club Support Programme.

We were delighted to host the following seminars:

- Funding – New Council Policy
- Reporting Standards for Registered Charities
- Kwisport Induction Course for Coaches
- Health and Safety (2 workshops) – New Legislation

All presentations were well attended by our affiliated clubs.

Clubs continued to benefit from the advice given to them either on an individual basis when required throughout the year or as a result of information sharing at meetings and presentations. Our goal is to see more capable tennis clubs offering better programmes and services to more people via the club network.

Tennis Auckland utilised the expertise of our own Club Support Group and the Regional Sports Trust Capability Teams to provide more assistance and guidance to our clubs. In many cases it was extremely helpful for a club to have “another set of eyes” look at their situation and to offer solutions.

This year, the CCPP (Community, Coaching, Participation, Places) unit was established with the addition of Nick Jacques and David Guy to the staff in a shared arrangement with our neighbours Tennis Northern. Our strategy is to:

- Provide more opportunities for structured play
- Increase the number of deliverers
- Have more venues delivering national programmes

We are planning to embark on a range of initiatives to promote the national programmes Tennis Hot Shots, Cardio Tennis and Tennis Xpress to encourage more people to take up tennis in the region. This is an exciting time for the game as we strive to provide more enjoyable experiences for greater participation of people playing.

## Delivering Tennis in Clubs and Schools (continued)

### SCARBRO CARO BOWL

The men's title was won for the second time in a row by defending champions Blockhouse Bay who beat first time finalists Cockle Bay in the final. The contest was played in front of a large crowd at Cockle Bay Tennis Club who did a superb job hosting the event.

The women's title was won for the third time in succession by Sunnyhills who beat Parnell in the final. The competition was very evenly contested between the top four teams throughout the round robin play and semi-final encounters.

At the season ending debrief it was decided to form a Working Group to review the competition with a view to making changes next season.

Congratulations to all teams, players, managers and supporters for making this the strongest interclub competition in the country. A special word of thanks to long time sponsors Scarbro for their ongoing support.

### SENIOR INTERCLUB

This season 377 teams competed in the senior interclub competition and team members were able to enjoy the social, fitness and competitive joys of playing tennis regularly on Saturday afternoons. We had 29 teams opt for the twilight competition during the week and for those players wanting to play during winter we accommodated 69 teams in total. That added up to a large number of people participating in organised competition representing their clubs. The Senior Interclub Club of the Year was Buckland's Beach.

Thanks very much to the interclub controllers, team managers and captains for your contribution. The administration of these events is a logistical challenge at times, so congratulations are in order for the work done by Tennis Auckland's Nyree Smith and Deirdre Gibbs who did a superb job again this year.

### JUNIOR INTERCLUB

The number of teams participating in junior interclub were identical to the previous year with a total of 355 teams involved over the summer season. The competition ran very smoothly and the administrators had very few issues to deal with. One of the highlights was a modified format for the Scarbro Junior Caro Bowl where teams were split into different pools for round robin play. The introduction of a Reserve Grade for this competition also proved popular.

The Junior Club of the Year was Jellicoe Park.



SCARBRO CARO BOWL MEN'S FINAL

### MIDWEEK LADIES INTERCLUB

This year we saw a lift in the number of teams entering the competition before and after Xmas. The overall number of teams was 199 for the season which was up by 8 teams on the previous one. Winning teams were presented with their prizes at the Tennis Auckland Awards night for the second straight year in what has turned out to be a popular move.

This competition always runs very smoothly which is a testament to the fine work done by the interclub controllers at participating clubs and by our own team at Tennis Auckland. The Midweek Ladies Club of the Year was awarded to Orakei Tennis Club.

Tennis Auckland is very appreciative of the funding support received from NZCT enabling us to administer these interclub competitions in a professional manner.

### WILSON LADIES INDOOR

The Wilson Ladies Indoor Singles competition was played across the last three school terms of the year and attracted a core group of regular singles players.

Entry numbers for the Wilson Ladies Indoor Doubles in the second and third terms were up on the previous year while the numbers for the Evening Indoor competition remained stable.

These are great competitions for club and non-club members to enjoy guaranteed regular matches played indoors over the winter months.

We would like to express our thanks to Wilson for supporting the Ladies Indoor competitions this year.

# Growing our Junior Talent

JAMES GREENHALGH – REGIONAL PERFORMANCE MANAGER

## OVERVIEW

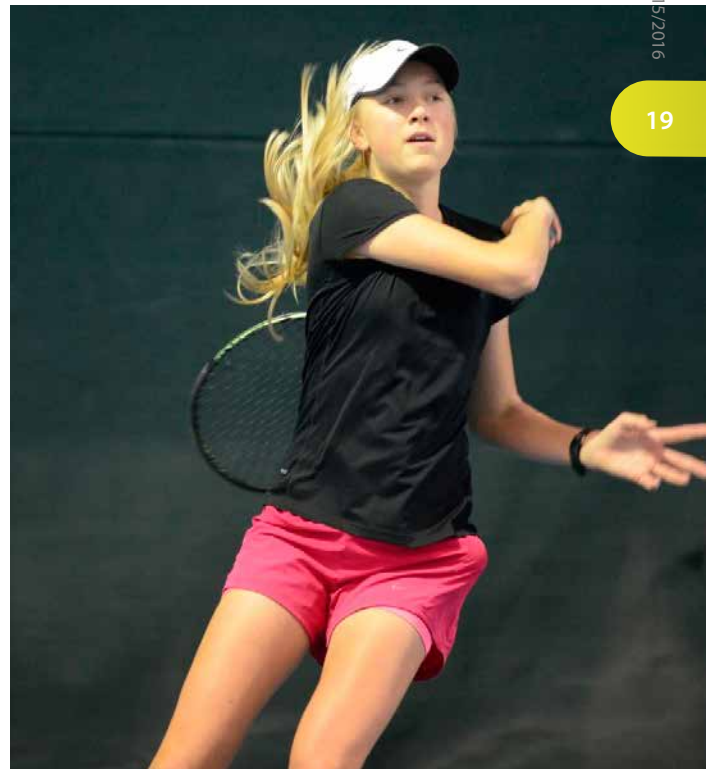
2015/2016 year has been successful for Auckland's junior developing players. For the second consecutive year Auckland won the National Junior Teams Event "Region of the Year". This is an accolade our Region can be proud of and a great reward for the efforts shown throughout the 4 days of competition. There were also many individual achievements spanning the 2015/2016 season including players making finals and winning National Junior Championship and Junior Masters tournaments. The strength in our younger age groups is exciting and we look forward to watching their results unfold in the years to come. Other notable successes are Tennis New Zealand Targeted Athlete selections, National Representation and multiple USA College Placements. Auckland's inclusive regional approach to coaching, adds value to a players existing programme and is in alignment with Tennis New Zealand's 2014 – 2017 player development pathway.

The strengthening links with Auckland's network of leading coaching programs continues to be a priority and we are seeing players and their coaches working closely together with our regional coaching programme, ultimately resulting in maximizing training environments for all developing players. This was complimented with a series of "Connecting Coaches" meetings giving coaches the chance to connect, learn and share tennis knowledge in a relaxed environment. The highlight of these meetings was a visit from Roger Rasheed one of the world's leading coaches who shared his experiences and spent time on and off the court with coaches from across Auckland.

The Super City Tennis Academy is based at two of Auckland's premier indoor tennis facilities (ASB Tennis Arena and Scarbro Tennis Center) and during the past year delivered over 600 hours of structured training sessions to over 100 players. Players again had the opportunity to learn and develop in a comprehensive

and professional environment under quality coaches. The academy's 5 fundamental pillars (Coaching, Physical Conditioning, Personal Development, Mental Skills and Match Play) were at the core of all sessions.

In addition to the Super City Tennis Academy coaching, match play training sessions were held for Auckland's best ranked players. This initiative brought the highest ranked players in their age groups together to train indoors during the winter months and created an inclusive learning environment for both athletes and coaches.



SARAH WEEKLEY



CONNECTING COACHES

## THE YEAR IN REVIEW

- Coaching sessions to more than 100 aspiring tournament players
- Conducted 600+ hours of training sessions
- Alignment with Tennis New Zealand player development pathway
- Auckland coaches working together
- Match play sessions
- Connecting coaches meetings





NJTE - NATIONAL JUNIOR TEAMS EVENT 2016 REGION OF THE YEAR

## 2016 NATIONAL JUNIOR TEAMS EVENT

Since 1985 the National Junior Teams Event has been New Zealand's most prestigious event for aspiring young tennis players around the country. For a sport that is predominantly individually based, the National Junior Teams Event competition is a great chance for players to come together, represent their Region and get involved in a team based environment. In January 2016, 144 of New Zealand's 12, 14 and 16 and under junior tennis players competed for their region in a four day tournament including singles, doubles and mixed doubles. Players compete in National tournaments all year in the hope of being selected to attend this prestigious event. This Tier #1 National event has been designed for the next generation of talented junior players and is a key component for tennis development in both Auckland and across New Zealand. For the second consecutive year Auckland won National Junior Teams Event "Region of the Year".

Not only did we achieve the desired result but the "how we went about it" was recognized by TNZ with two Auckland players winning Sportsmanship awards voted by their peers (Shona Nakano and Aulky Wang).

Teams were captained by each region's leading coaches. A special mention to our team captains (Angela Swinkels, Jono Frankle and Daniel Kelly) and managers (Leela Beattie, Adam Staub and Dwayne Cleugh) who were exceptional throughout the competition and gave endless hours to our 2016 campaign. This successful result is a direct reflection of all the exceptional player development work being done Auckland wide.

Breakdown of individual team results:

- 12U Gold
- 14U Silver
- 16U Silver

## INDIVIDUAL JUNIOR SUCCESSES

- 12U National Junior Championships Boys Runner up – Kevin Fu
- 12U National Junior Championships Girls Runner up – Mia Milojevic
- 14U National Junior Championships Boys Runner up – Chris Zhang
- 14U National Junior Championships Girls Winner – Holly Stewart
- 12U Junior Masters Top 8 Finals Boys Winner – Kevin Fu
- 12U Junior Masters Top 8 Finals Boys Runner up – James Sim
- 12U Junior Masters Top 8 Finals Girls Runner up – Ana Tamanika
- 14U Junior Masters Top 8 Finals Boys Runner up – Chris Zhang
- 14U Junior Masters Top 8 Finals Girls Runner up – Holly Stewart
- Auckland Junior Boy of the Year (Ray Rogers Trophy) – Chris Zhang
- Auckland Junior Girl of the Year (Jean Ferrier Trophy) – Jade Lewis
- 2015/2016 Tennis New Zealand Development Targeted Athletes
  - Chris Zhang
  - Matthew Shearer
  - Ana Tamanika

# Tennis Auckland Umpires Association

DAVID J. SMITH – PRESIDENT 2015/16

It gives me great pleasure to present for your consideration my President's Report for the 2015/16 year which will cover the key highlights of the last 12 months of our Association and our members.

Several of our members have achieved excellence on the local and world stage with Ross Morrison being honoured in the 2016 New Year's Honour List for services to tennis; Dimitar Trifunovski and Christine McKnight being selected as line umpires for the 2016 Rio Olympics and Paralympics respectively; Melissa Rigby also excelled by passing the ITF White Badge School in China mid last year and David Smith by being awarded the Services to the Game Award by the ITF at the ITF AGM in Zagreb, Croatia in June 2016. Melissa was also selected to attend the National Chair Umpire Development Course in Australia.

Both Blaze and his son, Dimitar Trifunovski, are our most active full-time officials with Blaze being the chair umpire in over 70 matches on the ATP, WTA tours and also Grand Slams and Davis Cup. He was also the Review Official at numerous events on the ATP Tour. Similarly Dimitar was the chair umpire for over 45 matches on the WTA and ATP Tours. He was also the Review Official for 8 weeks and worked at many events as a line umpire including the ATP Finals in London and Wimbledon Men's Singles Final.

The visible local public highlight of our officiating year was the ASB Classic with David Smith and Stephen Noble the respective Referee and Chief of Officials. David Smith also officiated as the Referee in the Philippines vs Chinese Taipei Davis Cup Tie in Manila. Additionally, Patrick O'Rourke continues to be the Referee for all the ITF Junior Events held in the Oceania Tennis Federation Region of the Pacific.

Given the numerous events that our Referees are now working for, Tennis Auckland and your executive, thought it was prudent that these officials attend a First Aid Course to ensure that, should there be a medical emergency whilst they were overseeing events and there were no medics on hand, that they had better skills and knowledge in this area to provide player support and care if needed. To this end some nine Referees attended a one-day course by Medi Train in November 2015.

During the year your executive decided it was timely to update the livery of the Association and a new logo with associated artwork, badges and certificates were produced. Our thanks are extended to Dick Garrett for designing and arranging this.

The following are the internationally certified Officials in our Association:

Official	Chair	Chief Umpire	Referee	Review Official
Christine McKnight		White		
Stephen Noble		Gold	White	
Patrick O'Rourke			White	
Melissa Rigby	White			
David Smith			Gold	
Blaze Trifunovski	Silver			Yes
Dimitar Trifunovski	Bronze			Yes

One of our Association's main focuses is the ongoing training and mentoring of officials. In this regard, we thank John and Lynly Barry who conducted a very successful Referee's course in late December 2015 at the Scarboro Tennis Centre and Christine McKnight for similarly co-ordinating Line umpire Training Courses. A further Referee's Course will be held in October 2016 and similarly a line Umpire Training Course in late October.

In closing, I wish to record my huge debt of gratitude to the small group on our executive who continue to do outstanding selfless work in managing the affairs of your Association. In particular I want to record the efforts of Lynly Barry (Secretary), Ross Morrison (Treasurer), Desrae Garrett (Officiating Co-Coordinator), Carol Cummings (Call Out), Christine McKnight (Line Umpire Training), Blayne Newton, Chris Dunne, Alan Clarke and Hamish Masters.



# Tennis Seniors Auckland 2015/16

DAVID BRADSHAW – PRESIDENT

Seniors Tennis in Auckland is alive and well!

Tennis Seniors Auckland continues to offer something different from your average tennis club for tennis players over the age of 35. Many tennis clubs are now providing regular club days for the older tennis players especially during the week where they are attracting people who have retired from work. But Tennis Seniors Auckland offers something beyond this.

Membership of Tennis Seniors Auckland entitles a player to enter in "Seniors" tournaments all around the country (and overseas) and to compete with other players of their own skill level. These tournaments almost always cater for "A", "B" and "C" Grade players ensuring that all who enter get a good days tennis. Tennis Seniors Auckland holds its Seniors tournament at Labour Weekend each year. Tennis Seniors Auckland is fortunate in having the long standing support of Farmers who have provided the major prizes for this tournament for many years. The tournament was held at the Eden-Epsom Tennis Club in 2015 but will move to the Remuera Racquets Tennis Club at Labour Weekend 2016.

Teams from Tennis Seniors Auckland enjoyed considerable success in the National Teams Event which is played in five year age groups. Three Auckland teams won their age group and another team came second. A number of our members also performed with distinction in the individual Nationals Event.

Tennis Seniors Auckland competes against other neighbouring Seniors Associations in annual representative fixtures.

These matches are played against the Hibiscus Coast, Waikato, Counties, South Auckland, Lower Northland, North Harbour and Northland. With 12 men and 12 ladies in a team there is plenty of opportunity to play against and socialise with players from these other Associations.

There are opportunities to represent New Zealand overseas at various world events which are usually played in age groupings. During the year several Tennis Seniors Auckland members were selected to play in New Zealand teams.

After nine years as President, I will be stepping down from that role, but will be continuing on the Board as Secretary. In August 2016, Grant Waller will be taking over as President. I was pleased to see Tennis Auckland recognise Julie Blow's 15 years of service as Secretary of Tennis Seniors Auckland with a Silver Club Administration Award.

Our Treasurer, Maria Morrison, has done a tremendous job with the Association's finances ensuring that at any point in time we know exactly where we stand financially and how many financial members we have. As over 50% of our annual subscription of \$22 now goes towards the Tennis New Zealand Seniors affiliation fee accurate membership figures are essential.

My thanks also to the other members of the Board – Sita Brosig, Robyn Page and Simon Crozier (the Tennis Auckland Representative) for their ongoing work for Tennis Seniors Auckland.

## Tennis Seniors South Auckland Inc.

### *Tamaki ki te Tonga*

DICK GARRATT - PRESIDENT

#### TENNIS NZ TEAMS EVENTS AT HAMILTON

TSSA fielded five teams:

W40+ / M35+ / W50+ / M50+ / M65+

With our Women's 40+ winning their age group and defeating the 35+ teams, consisted of Captain Leona Davis-Kaye, Gaye Carson, Annie Hawaikirangi, Tia van Selm and Fiona Wikaira

TSSA takes pride in hosting teams with the best possible hospitality while showcasing their on-court ability and we were graced with the presence of Mr Brian Scarborough at all rep fixtures. Brian's wife Mary-Rose is a TSSA member.

TSSA is in the process of putting teams together for the Teams Event at Whangarei and participation at next year's World Masters tennis section.



#### ANNUAL REP MATCHES

Tennis Seniors South Auckland hosted this year's Rep matches at the Koru Tennis Club, with the following results:

- v LOWER NORTH SENIORS (won 16 - 14)
- v NORTH HARBOUR SENIORS (won 20.5 - 9.5)
- v COUNTIES RACQUETEERS (won 24.5 - 5.5)
- v NORTHLAND SENIORS (lost 12.5 - 17.5)
- v TENNIS SENIORS AUCKLAND (rained out with Auckland leading)
- v WAIKATO SENIORS (won 21 - 9)



## Pascoe Cup Tennis Association

MARK PURDIE - PRESIDENT

The 92nd Pascoe Cup Business House Tournament was held at the Nicholson Park complex in Mount Eden and the Ngatira Tennis Club in Clive Road from 9th February to 23rd March 2016 with the finals held at the Scarbro Tennis Centre due to rain on finals night. This year's event attracted 33 teams from 18 companies. Round robin matches for all events were played at Nicholson Park until the semi-finals due to the numbers and then transferred to Ngatira for the last games.

### The winners and runners-up were:

**Men's Doubles** PricewaterhouseCoopers

**Runners-up** Westpac 2

**Ladies Doubles** KPMG

**Runners-up** PricewaterhouseCoopers

**Mixed Doubles** PricewaterhouseCoopers

**Runners-up** Somerville Special School

Our sincere thanks go again to Pascoes the Jewellers and to Anne, David, and Greg Norman for their continued support and interest in the association and the tournament. To Tennis Auckland who worked with us during the tournament and on finals night our sincere thanks. And to all of the teams who continue to support and enjoy a unique tennis event we look forward to seeing you again in 2017 to continue the story.

### PASCOE CUP BUSINESS HOUSE

**Winning Team (Men)** PricewaterhouseCoopers

**Winning Team (Women)** KPMG

**Winning Team (Mixed)** PricewaterhouseCoopers

## Auckland Secondary Schools' Tennis Association

COLLETTE AMAI

RELATIONSHIP MANAGER - COLLEGE SPORT

The secondary school Saturday competition in 2016 involved 231 teams, up slightly on 2015. There are 54 schools represented, including the North Harbour competition.

Secondary school tennis continues to be a popular summer sport. In the Champion of Champions tournament, St Kentigern dominated the Boys division, with Heve Kelley of St Kentigern winning the senior singles to help his school win the James Aitkenhead Shield for overall school supremacy. Westlake Girls High School dominated the Girls division, with Lauren Alter winning the senior singles. Westlake won the overall school placing Shield.

In the Auckland team competition held on Saturday morning, the Premier Boys competition was won by St Kentigerns College with Auckland Grammar School runners-up. The Premier Girls competition was won by Westlake Girls High School with St Kentigerns College runners-up. The Senior A2 competition was won by the Auckland Grammar 2 for the boys and Macleans College for the girls. St Kentigern boys won both the Intermediate and Junior titles this year, with Baradene College taking out the Intermediate section and St Kentigern taking out the Junior girls.

This year, College Sport Tennis has taken responsibility of the organisation and financial matters from the Auckland Secondary School Tennis Association. Both are still working closely together as well as with Tennis Auckland.

We look forward to continue the working relationship with Tennis Auckland.



PASCOE CUP LADIES DOUBLES



# Awards & Milestones



ROSIE CHENG



# Tennis Auckland Awards

MARK LEWIS

The annual Tennis Auckland Awards seem to grow in prestige every year and this has truly become a highlight of the tennis season in the region. The tennis fraternity come together to celebrate both team and individual success during the course of the evening and in recent years the attendance has exceeded 200 guests on each occasion. This year was arguably the most spectacular night ever as guests were welcomed with champagne at the door and served up platters of fine food between breaks in the official proceedings.

It gives Tennis Auckland a great deal of pleasure to host this evening and recognise the wonderful achievements of players, teams, clubs and volunteers. I would like to thank Nyree, Deirdre, Wayne and everybody who helped put on such a great night. We congratulate again all of our award winners this season and thank everyone who attended our Awards Night and made it such a special tennis occasion.

## TENNIS AUCKLAND CLUB OF THE YEAR

ORAKEI TENNIS CLUB

## TENNIS AUCKLAND INTERCLUB CLUB OF THE YEAR

<b>Midweek Ladies Club of the Year</b>	Orakei Tennis Club
<b>Junior Interclub Club of the Year</b>	Jellicoe Park Tennis Club
<b>Senior Interclub Club of the Year</b>	Bucklands Beach Tennis Club

## TENNIS AUCKLAND CLUB AWARDS

<b>Club Facilities</b>	Pakuranga Tennis Club
<b>Club Administration</b>	Orakei Tennis Club
<b>Club Marketing, Promotion and Membership</b>	Orakei Tennis Club
<b>Club Spirit</b>	Jellicoe Park Tennis Club
<b>Club Coach</b>	Campbell Cramer-Roberts (Glendowie Tennis Club)
<b>Club Volunteer</b>	Amanda Chapman (Bucklands Beach Tennis Club)

## TENNIS AUCKLAND PLAYERS OF THE YEAR

<b>Junior Girl Player of the Year</b>	Jade Lewis
<b>Junior Boy Player of the Year</b>	Chris Zhang
<b>Senior Player of the Year</b>	Marina Erakovic

## CHRIS LEWIS HONOURS AWARDS

<b>2015 Girl</b>	Jade Lewis
<b>2015 Boy</b>	William Matheson

## TENNIS AUCKLAND HONOURS AWARDS

<b>Silver Award (10+ Years' Service)</b>	Mary Gardner (Orakei) Lesley Stewart (Bucklands Beach) Shelley Collett (Glendowie) Julie Blow (Tennis Seniors Auckland)
<b>Gold Award (20+ Years' Service)</b>	Gary Little (Dunholme) Alma Sax (Dunholme) Julien Southgate (Sunnyside Tennis Club) Beth Graydon (Lynfield Tennis Club) Patricia Swift (Dunholme)

## CLUB ADVISORY & SUPPORT COMMITTEE

PAUL HARVEY

I am pleased to report that it has been a good year for the Club Support Liaison Committee.

The Committee members this year were Donald Sim, Angela Hart, Guy Nash, Judy Bent and Carol Bourne. We were very pleased to have Carol join our committee after she attended a couple of meetings in the previous year. The Tennis Auckland representative was Mark Lewis and I would like to thank him and all the other members for their contribution.

The group continues to meet every two months and our focus remains on supporting our member clubs by offering tools like the club assessment and resources available on the Tennis Auckland website. We have placed more emphasis on information sharing via workshops and club forums and this year we hosted several of these on relevant topics such as Funding, Health and Safety and the new laws around Charitable Organisations.

The Tennis Auckland Awards were held in May this year and the committee were very pleased with the excellent standard of the nominations which made choosing the winners in each category very difficult. Once again there were excellent numbers in attendance at the awards evening which was thoroughly enjoyed by everybody in attendance.

Members of the group visited a handful of clubs to discuss and offer advice and support on varying issues or problem areas and we are pleased to report that these clubs have benefitted from this expertise and are now in a stronger position than they were a year ago.

We continue to offer to clubs our combined knowledge and experience should they need it and we are available to visit clubs if required.

We look forward to another good year for 2016/2017.

## TENNIS AUCKLAND EMERITUS COMMITTEE

ROGER HARVEY – BOARD APPOINTMENT

On behalf of the Committee I would like to report on another year which has passed so quickly.

The role of the Emeritus Committee continues in the very significant areas of:

### **Nomination and selection of our President.**

Special thanks to Don Cotter who has served his year as President with enthusiasm and energy and to Chris Day who has accepted the nomination as Vice President.

### **Reward/acknowledgement of volunteers who continue to give of their time and energy to Tennis Clubs.**

This year the Committee endorsed the awarding of 5 GOLD AWARDS (twenty years of service) and 4 SILVER AWARDS (ten years of service) to club members. With a changing world, for everyone their time is under pressure. Many organised sports are suffering from a drop in membership and perhaps more importantly in volunteers to administer their Club and its activities. Tennis Auckland and the clubs are fortunate to have such willing volunteers.

### **Life Membership**

This year we were delighted to recommend and to progress the well deserved appointment of Pam Sowter as a Life Member.

### **Committee**

During the year Guy Nash was co-opted to the Emeritus Committee. His past knowledge, his energy and unfailing commitment to Tennis will, I'm sure, add a further dimension to our Committee.

### **General**

Work on the future development of the ASB Tennis Arena continues apace. However, it is the clubs and their members who are the strength of our sport. Linked to this is the 'heritage' that has built Tennis Auckland to its present position. The Emeritus Committee is conscious that this special mix of History and Tradition is retained.

### **Thanks**

My grateful thanks to my Committee. I am delighted that they are willing to be nominated again for the coming year.



# Facts & Stats





# Club Presidents & Honorary Sub Associations

	Club	President	Club Address
1	Blockhouse Bay	Hamish Linklater	36 Rathlin St, Blockhouse Bay
2	Bridge Park	Anna Jacobs	7 Taylors Road, Mangere Bridge
3	Bucklands Beach	Brett Clarke	Rogers Park, Jern Place, Eastern Beach
4	Campbell Park	Leo McCormack	197 Greenlane West, Epsom
5	Clevedon	Callum McCallum	Monument Road, Clevedon
6	Cockle Bay	Vicki Ashley	41 Meadowlands Drive, Howick
7	Dunholme	Duncan Turnbull	43 Ridings Road, Remuera
8	East Tamaki Domain	Kalio Akolo	244 R East Tamaki Rd
9	Eden Epsom	Paul O'Brien	1 Penryhn Rd, Mt Eden
10	Gladstone	Suresh Nagaiya	110 Gladstone Rd, Parnell
11	Glendowie	Mhairi Porteous & Neesh Ellis	18 Forfar Rd, Glendowie, 1071
12	Glen Eden	Anne Nightingale	42 Glendale Road
13	Herne Bay	Scott Kittely	10 West End Rd, Herne Bay
14	Howick	Angela Hart	Cnr Wellington & Howe St, Howick
15	Hunua	Alan Matheson	Hunua Rd, Hunua RD3 Papakura
16	Jellicoe Park	Chris Temu	Marr Road, Manurewa
17	Karaka	Wayne Kidd	Karaka Sports Park,
18	Kohimarama	Sue Hardy	30 Melanesia Rd, Kohi
19	Koru	Steve Morris	Cnr Blyton & Gossamer Dr
20	Lynfield	Rodney Attwood	18 The Avenue, Lynfield
21	Mangere Combined	Dick Garratt	241R Kirkbride Rd, Mangere
22	Manurewa	Gary Blyth	33 Russell Rd, Manurewa
23	Maraetai	Stephen Jowers-Wilding	954R Whitford-Maraetai Rd, Te Puru Park, Maraetai
24	Mission Bay	Anton Koukine	11A Marau Cres, Mission Bay
25	Mt Albert	Frank Freeman	982 New North Road, Mt Albert
26	Mt Eden	Phil Barker	22 Poronui Street, Mt Eden
27	Mt Wellington	Aad van der Poel	50 Dunkirk Road, Pt England
28	Next Generation		1 Tennis Lane, Parnell
29	New Lynn	Alex Metzger	Mason Park, Fruitvale Rd
30	Ngatira	Bill Borrmann	24 Clive Road, Mt Eden
31	Orakei	Mark Hutton	2 Kupe Street, Orakei
32	Otahuhu	Isitolo Maka	Cnr Portage & Atkinson Rd, Otahuhu
33	Pakuranga	Jenny Richardson	101 Pigeon Mountain Road
34	Papakura Tennis & Squash	Cory Dyer	Cnr Green & Queen Sts, Papakura
35	Papatoetoe	Harry Tawhai	20 Sutton Cres, Papatoetoe
36	Parnell	Chris Cotton	Cnr Manssell & Titiko Sts
37	Pt Chevalier	Ray Baillie	335 Pt Chevalier Rd, Pt Chev
38	Pompallier	Ryan Sharma	11 Green Street, St Marys Bay
39	Remuera	Heather Worley	17 Dilworth Ave, Remuera
40	Royal Oak	Daniel Lal	116 Symonds St, Royal Oak
41	St Heliers	Jennifer Myers	3 Goldie St, St Heliers
42	Sunnyhills	Michael Peterson	6 Oleander Point, Sunnyhills
43	Sunnyside	Trish Langdon	York Road, Papatoetoe
44	Te Atatu	Suzanne Florian	572C Te Atatu Road
45	Te Pai Park	John Caldwell	34 Te Pai Place, Henderson
46	Titirangi	Wayne Campton	1 Ava Ave, Titirangi
47	Waiata-Epsom	John Cook	20 Fernleigh Ave, Epsom
48	Waiheke	Bill Kinghorn	Onetangi Sports Park, O'Brien Road
49	West End	Al Monro	2 Fife St, Westmere
50	West Harbour	Martin Cleave	Picasso Drive, West Harbour
51	Winstone Park	David Gordon	17 Akarana Avenue, Mt Roskill
52	Counties Assn	Alan Clarke	80 - 86 West St, Rosa Birch Park, Pukekohe 2120

## Sub Associations

53	Auckland Umpires Association	David Smith	
54	Pascoe Cup	Ross Pickett	
55	Tennis Seniors Auckland	David Bradshaw	
56	Tennis Seniors South Auckland	Dick Garratt	
57	Auckland Secondary Schools	Collette Amai	

# Tennis Auckland Affiliated Membership 2015/16

	CLUB	Adults 35+		Adults 19-34		Junior 12-18		Junior 11 & Under		Current Year Total	+/-	Variance	Prior Year Total
		Male	Female	Male	Female	Male	Female	Male	Female	2015/16			2014/15
1	BLOCKHOUSE BAY	91	57	26	14	17	12	9	7	233	+	1	232
2	BRIDGE PARK	29	15	5	5	18	15	30	36	153	-	(65)	218
3	BUCKLANDS BEACH	55	76	5	6	53	34	48	39	316	-	(3)	319
4	CAMPBELL PARK	54	64	0	0	89	79	70	58	414	+	23	391
5	CLEVEDON	69	62	0	0	10	19	17	17	194	+	28	166
6	COCKLE BAY	103	83	13	10	67	37	25	25	363	-	(33)	396
7	DUNHOLME	46	72	0	0	43	52	30	40	283	+	19	264
8	EAST TAMAKI DOMAIN	14	4	3	2	1	5	6	4	39	+	4	35
9	EDEN EPSOM	95	73	17	6	43	32	43	21	330	-	(51)	381
10	GLADSTONE	66	73	0	0	71	43	0	0	253	-	(60)	313
11	GLEN EDEN	10	8	0	0	8	4	24	32	86	+	14	72
12	GLENDOWIE	67	81	12	7	69	32	20	23	311	-	(16)	327
13	HERNE BAY	101	48	17	8	25	13	19	9	240	+	6	234
14	HOWICK	41	56	7	4	25	29	32	29	223	-	(8)	231
15	HUNUA	5	5	0	0	4	0	2	3	19	-	(4)	23
16	JELICOE PARK	9	8	4	2	13	11	23	30	100	-	(1)	101
17	KARAKA	27	31	5	5	18	10	2	0	98	+	4	94
18	KOHIMARAMA	90	131	11	11	53	45	32	24	397	-	(17)	414
19	KORU	61	44	8	2	5	8	10	6	144	-	(1)	145
20	LYNFIELD	33	22	4	2	12	2	36	37	148	+	16	132
21	MANGERE COMBINED	4	2	1	0	8	6	12	19	52	+	30	22
22	MANUREWA	12	9	9	2	8	7	5	6	58	-	(3)	61
23	MARAETAI	8	15	2	5	30	20	25	26	131	-	(33)	164
24	MISSION BAY	85	60	33	19	17	13	7	10	244	+	9	235
25	MT ALBERT	15	12	0	0	14	10	23	25	99	+	20	79
26	MT EDEN	28	15	18	9	67	30	39	31	237	-	(47)	284
27	MT WELLINGTON	11	10	3	3	6	1	20	16	70	+	10	60
28	NEW LYNN	8	16	0	0	0	0	6	6	36	-	(6)	42
29	NEXT GENERATION	36	20	22	0	8	2	19	8	115	+	12	103
30	NGATIRA	47	17	4	3	2	0	1	0	74	+	9	65
31	ORAKEI	33	63	2	3	21	10	17	14	163	+	21	142
32	OTAHUHU	12	7	0	1	3	2	5	4	34	+	14	20
33	PAKURANGA	85	64	0	0	43	23	40	31	286	-	(22)	308
34	PAPAKURA	21	13	7	6	8	14	9	15	93	-	(9)	102
35	PAPATOETOE	35	2	10	6	11	12	14	14	104	+	12	92
36	PARNELL	159	99	15	8	12	7	20	15	335	-	(71)	406
37	POINT CHEVALIER	30	39	20	12	34	23	54	59	271	+	24	247
38	POMPALLIER	137	96	0	0	8	14	65	77	397	-	(46)	443
39	PUKEKOHE	4	4	2	0	16	6	0	0	32	-	(5)	37
40	REMUERA	157	34	37	8	43	24	6	0	309	-	(63)	372
41	ROYAL OAK	68	38	27	19	22	26	24	15	239	-	(11)	250
42	ST HELIERS	55	36	8	2	11	10	32	22	176	+	11	165
43	SUNNYHILLS	36	50	1	6	28	33	31	26	211	-	(3)	214
44	SUNNYSIDE	11	14	0	0	10	1	2	0	38	+	1	37
45	TE ATATU	14	17	9	7	9	5	15	10	86	-	(62)	148
46	TE PAI PARK	16	6	4	2	20	4	13	2	67	+	3	64
47	TITIRANGI	39	21	0	1	21	7	21	9	119	-	(15)	134
48	WAIATA EPSOM	31	18	3	0	3	5	11	5	76	-	(4)	80
49	WAIHEKE	22	10	0	0	6	1	0	0	39	-	(5)	44
50	WEST END	98	113	8	3	31	47	40	41	381	-	(16)	397
51	WEST HARBOUR	48	28	9	2	16	10	8	7	128	-	(12)	140
52	WINSTONE PARK	30	19	15	1	35	4	17	16	137	+	22	115
	<b>TENNIS AUCKLAND 2015/16</b>	2,461	1,980	406	212	1,215	859	1,079	969	9,181	-	(379)	9,560
	<b>Last Year Total 2014/15</b>	2,553	2,102	365	257	1,225	922	1,135	1,001	9,560			
	<b>CHANGE # +/-</b>	(92)	(122)	41	(45)	(10)	(63)	(56)	(32)	(379)			(379)
	<b>% CHANGE +/-</b>	(4)%	(6)%	11%	(18)%	(1)%	(7)%	(5)%	(3)%	(4)%			(4)%

COUNTIES TENNIS ASSOC	65	51	4	0	84	56	75	72	407
ADJUSTED TOTAL	2,526	2,031	410	212	1299	915	1154	1041	9,588
SOURCE	2,526	2,031	410	212	1299	915	1154	1041	9,588
VARIANCE	0	0	0	0	0	0	0	0	0

## Counties Tennis Affiliated Membership 2015/16

CLUB	Adults 35+		Adults 19-34		Junior 12-18		Junior 11 & Under		Current Year Total	+/-	Variance	Last Year Total
	Male	Female	Male	Female	Male	Female	Male	Female	2015/16			
BOMBAY	4	0	0	0	7	7	11	15	44	-	(5)	49
PATUMAHOE	3	1	1	0	10	9	10	7	41	-	(6)	47
POKENO	0	0	0	0	0	0	0	4	4	-	(12)	16
PUKEKAWA	0	0	0	0	0	0	0	0	0	-	(4)	4
PUKEKOHE	14	7	0	1	18	10	7	6	63	-	(13)	76
PUKEKOHE EAST	0	0	0	0	17	12	24	12	65	+	1	64
RUNCIMAN	22	31	2	0	31	9	12	9	116	+	62	54
WAIUKU	26	16	0	2	17	15	11	19	106	+	65	41
<b>COUNTIES TENNIS 2015/16</b>	<b>69</b>	<b>55</b>	<b>3</b>	<b>3</b>	<b>100</b>	<b>62</b>	<b>75</b>	<b>72</b>	<b>439</b>	<b>+</b>	<b>88</b>	<b>351</b>
<b>Last Year Total 2014/15</b>	<b>55</b>	<b>10</b>	<b>3</b>	<b>0</b>	<b>92</b>	<b>65</b>	<b>82</b>	<b>44</b>	<b>351</b>	<b>+</b>	<b>88</b>	<b>351</b>
<b>CHANGE # +/-</b>	<b>14</b>	<b>45</b>	<b>0</b>	<b>3</b>	<b>8</b>	<b>(3)</b>	<b>(7)</b>	<b>28</b>	<b>88</b>			<b>88</b>
<b>% CHANGE +/-</b>	<b>25.5%</b>	<b>450.0%</b>	<b>0.0%</b>	<b>0.0%</b>	<b>8.7%</b>	<b>(4.6%)</b>	<b>(8.5%)</b>	<b>63.6%</b>	<b>25.1%</b>			<b>25.1%</b>

## Greater Auckland Region Membership 2015/16

	Adults 35+		Adults 19-34		Junior 12-18		Junior 11 & Under		Total
	Male	Female	Male	Female	Male	Female	Male	Female	
2015/16									
TENNIS AUCKLAND	2,461	1,980	406	212	1,215	859	1,079	969	9,181
COUNTIES TENNIS	69	55	3	3	100	62	75	72	439
<b>TOTAL</b>	<b>2,530</b>	<b>2,035</b>	<b>409</b>	<b>215</b>	<b>1,315</b>	<b>921</b>	<b>1,154</b>	<b>1,041</b>	<b>9,620</b>
2015/15									
TENNIS AUCKLAND	2,819	2,337	0	0	1,347	1,051	1,020	828	9,402
COUNTIES TENNIS	60	10	0	0	108	61	70	45	354
<b>TOTAL</b>	<b>2,879</b>	<b>2,347</b>	<b>0</b>	<b>0</b>	<b>1,455</b>	<b>1,112</b>	<b>1,090</b>	<b>873</b>	<b>9,756</b>
Change +/-	(349)	(312)	409	215	(140)	(191)	64	168	(136)
Change (%) +/-	(12)%	(13)%	0%	0%	(10)%	(17)%	6%	19%	(1)%

# International Tournaments

## 2016 ASB CLASSIC WOMEN - SINGLES AND DOUBLES TITLES

Singles	Sloane Stephens (USA)
Doubles	Elise Mertens (BEL) / An-Sophie Mestach (BEL)

## 2016 ASB CLASSIC MEN - SINGLES AND DOUBLES TITLES

Singles	Roberto Bautista Agut (ESP)
Doubles	Mate Pavic (CRO) / Michael Venus (NZL)

# Senior National Events

## PASCOES NZ CHAMPIONSHIPS 2015

Men's Open Singles	Winner: Michael Venus [3]	Runner Up: Artem Sitak [4]
Women's Open Singles	Winner: Rosie Cheng [3]	Runner Up: Sacha Jones [1]
Men's Open Doubles	Winners: Artem Sitak [1] & Michael Venus	Runners Up: Finn Tearney [2] & Wesley Whitehouse
Women's Open Doubles	Winners: Rosie Cheng [1] & Sacha Jones	Runners Up: Leela Beattie [2] & Joanna Carswell

# Senior Domestic Tournaments

## AUCKLAND CHAMPIONSHIPS 2015

Men's Singles	Winner: Finn Tearney [1]	Runner Up: Rhett Purcell [2]
Women's Singles	Winner: Rosie Cheng [2]	Runner Up: Sacha Jones [1]

## SPRING OPEN INDOOR SINGLES TOURNAMENT 2015

Open Men's Singles	Winner: Tim Heslin [12]	Runner Up: Alex Low [4]
Open Women's Singles	Winner: Shaylee Syme [3]	Runner Up: Sarah Wardenburg [4]

### **B GRADE (S5U)**

Men's Singles	Winner: Chris Mckegg [4]	Runner Up: Jacque Anderson [1]
Women's Singles	Winner: Sayano Murayama	Runner Up: Sadheera Weerapperuma [1]



# Domestic Junior Tournaments

## TENNIS AUCKLAND JULY JUNIOR CHAMPIONSHIPS 2015

EVENT	POS.	NAME
Boys Singles 8	1	William Lawrence-Vaivai [1]
	2	Nikko Tuxford
Boys Singles 10	1	Rion Suga [3]
	2	Finn Burrridge [2]
	3	Jack Chapman [1]
	4	Yu Dian Dong [4]
Girls Singles 10	1	Sasha Situe [2]
	2	Jessica Li [1]
	3	Kristina Bogomazova
	4	Maddie Brill [3]
Boys Doubles 10	1	Finn Burrridge [1] + Rion Suga
	2	Stanley Long + Jack Quilty
Girls Doubles 10	1	Maddie Brill [1] + Sasha Situe
	2	Laekyn Hill-Wihapi + Katie Oliver
Boys Singles 12	1	Sam Hodges [3]
	2	Kevin Fu [1]
Girls Singles 12	1	Ana Tamanika [1]
	2	Ela Vakaukamea [2]
Boys Doubles 12	1	Sam Hodges [2] + Ethan Huff
	2	Thomas Chapman [1] + James Sim
Girls Doubles 12	1	Ana Tamanika [1] + Ela Vakaukamea
	2	Shona Nakano [2] + Ke Ren
Boys Singles 14	1	Aulky Wang [1]
	2	Sam Beech [3]
Girls Singles 14	1	Sadheera Weerapperuma [2]
	2	Deshma Weerapperuma [1]
Boys Doubles 14	1	Sam Beech [1] + Aulky Wang
	2	Nico Carlier [3] + Leo Taine
Girls Doubles 14	1	Nancy Fatai [1] + Peata Fatai
	2	Ofaloto Kaitaeifo + Sarah Li
Boys Singles 16	1	Hubert Chiang [1]
	2	Filippo La Cava [2]
Boys Singles 18	1	Charlie Hudson [1]
	2	Luke Taplin
Girls Singles 16/18	1	Tahlia Walsh [1]
	2	Melenia Kaitaeifo [4]
Boys Doubles 16/18	1	Charlie Hudson [1] + Connor Van Dalsum
	2	Elliot James Lepetit [2] + Luke Taplin
Girls Doubles 16/18	1	Melenia Kaitaeifo [1] + Tahlia Walsh
	2	Alice Hoskins [2] + Grace Hoskins

## AUCKLAND JUNIOR CHAMPIONSHIPS 2015

EVENT	POS.	NAME
Boys Singles 10	1	Jack Chapman [1]
	2	Victor Balgaradean
Girls Singles 10	1	Kristina Bogomazova [1]
	2	Olivia Brown
Boys Doubles 10	1	Victor Balgaradean + Dawson Parekowhai-Lage
	2	Lev Gorb + Carlson Lim
Girls Doubles 10	1	Kate Anderson + Kristina Bogomazova
	2	Olivia Brown + Hana Rose
Boys Singles 12	1	James Sim [1]
	2	Sam Allais [5]
Girls Singles 12	1	Ana Finau Tamanika [1]
	2	Sasha Situe [3]
Boys Doubles 12	1	Thomas Chapman [1] + James Sim
	2	James Mcpherson [5] + Sebastian Price
Girls Doubles 12	1	Ana Finau Tamanika + Olivia Tamanika
	2	Ruby Akolo + Lucy Xu
Boys Singles 14	1	Sam Beech [8]
	2	Corban Crowther [3]
Boys Singles 16/18	1	Jack Portegys [2]
	2	Nick Beamish [1]
Girls Singles 14	1	Ines Stephani [1]
	2	Sadheera Weerapperuma [2]
Girls Doubles 16/18	1	Saranya Nagpal [1]
	2	Melenia Kaitaeifo [2]
Boys Doubles 14	1	Sam Beech [1] + Aulky Wang
	2	Harry Browning [3] + Marcel Cronin
Boys Doubles 16/18	1	Nick Beamish [1] + Jack Portegys
	2	Liam Briggs + Natsumi Takahashi
Girls Doubles 14	1	Shona Nakano [3] + Ke Ren
	2	Nancy Fatai [2] + Peata Fatai
Girls Doubles 16/18	1	Lauren Lambert + Saranya Nagpal
	2	Melenia Kaitaeifo [1] + Ofaloto Kaitaeifo

## 2015 WILSON WINTER SATELLITE SERIES RESULTS

POINTS PRIZES ( BEST 10 TOURNAMENT POINTS)

1st	Karl Bennetts	7th	Luke Chambers
2nd	Carlson Lim	8th	Olivia Brown
3rd	Stanley Long	9th	David Min
4th	= Courtney Huff, Samuel Chen & Matt Josephs	10th	= Drew Smith & Natasha Fatani
6th	Leo Chow		

## TENNIS AUCKLAND XMAS JUNIOR TOURNAMENT 2015

EVENT	POS.	NAME
Boys Singles 8	1	Darius Carruthers
	2	Luca Karl Clyma
Girls Singles 8	1	Mahinarangi Warren
	2	Greer Atkinson [1]
Girls Doubles 8	1	Greer Atkinson [1] + Hayden Costain Fenkner
	2	Mahinarangi Warren + Sophie Watts
Boys Singles 10	1	Maka Maui
	2	Daniela Toa [8]
Girls Singles 10	3	Halle Fenkner [1]
	4	Emma Anderson [2]
Boys Doubles 10	1	Maka Maui + Daniela Toa
	2	Jamie Mackenzie [3] + Stanley Yugov
Girls Doubles 10	1	Olivia Brown [2] + Halle Fenkner
	2	Emma Anderson + Kate Anderson
Boys Singles 12	1	Alexander Mirkov [1]
	2	Adrian Rosioru [2]
Girls Singles 12	1	Shona Nakano [1]
	2	Nikayla Barnard [2]
Boys Doubles 12	1	Tom Edward Downs [5] + Daniel Persson
	2	Ethan Jacob Huff [1] + Jack William Loutit
Boys Doubles 12	1	Tina Marie Li [2] + Elyse Tse
	2	Shona Nakano [1] + Sasha Nina Situe
Boys Singles 14	1	Matthew Shearer [2]
	2	Satchel Benn [4]
Boys Singles 16	1	Te Kani Williams [1]
	2	Trent Massam [3]
Boys Singles 18	1	Hubert Chiang [4]
	2	William Hewett [2]
Girls Singles 14	1	Sarah Weekley [1]
	2	Mia Milojevic [9]
Girls Singles 16/18	1	Emilia Price [3]
	2	Elys Saguil Ventura [1]
Boys Doubles 14	1	Satchel Benn [1] + Jayden Harrison
	2	Thomas Hartono [2] + Matthew Shearer
Boys Doubles 16	1	Ryan Jackways [4] + Jack Douglas Portegys
	2	Ivica Batnozic [3] + Ishan Naik
Boys Doubles 18	1	Daniel Andonov + Petar Gorgiovski
	2	William Hewett [1] + Rory Murchland
Girls Doubles 14	1	Amily Suga [1] + Deshma Weerapperuma
	2	Antonia Lawson [2] + Ines Stephani
Girls Doubles 16/18	1	Amelia Lawson [1] + Sarah Weekley
	2	Ayesha Margaret M Burnett [2] + Amy Galloway



## TENNIS AUCKLAND AUTUMN JUNIOR TOURNAMENT 2016

EVENT	POS.	NAME
Boys Singles 10	1	Stanley Yugov [1]
	2	Jamie Mackenzie [3]
Girls Singles 10	1	Emma Anderson [3]
	2	Olivia Brown [1]
Boys Doubles 10	1	Jamie Mackenzie [1] + Stanley Yugov
	2	William Lawrence-Vaivai + Nikko William Tuxford
Girls Doubles 10	1	Olivia Brown [1] + Hana Rose
	2	Emma Anderson [2] + Kate Anderson
Boys Singles 12	1	Alexander Mirkov [1]
	2	Sam Allais [3]
Girls Singles 12	1	Georgia Brooke Bradley [2]
	2	Teinaki Helen William [1]
Boys Doubles 12	1	James Oscar Mcpherson [1] + Daniel Persson
	2	Ethan Jacob Huff [2] + Adrian Rosioru
Girls Doubles 12	1	Maddie Brill [3] + Zoe Kathleen Hannan
	2	Teinaki Helen William [1] + Lucy Xu
Boys Singles 14	1	Aulky Wang [1]
	2	Ivan Harol [2]
Girls Singles 14	1	Mia Milojevic [1]
	2	Jasmyn Maher [4]
Boys Doubles 14	1	Aleksandar Milivojevic [1] + Sebastian Price
	2	Freddy Hopkins [2] + Matthew Stevenson
Girls Doubles 14	1	Nancy Fatai [1] + Peata Fatai
	2	Jasmyn Maher + Kayla Nuzum
Boys Singles 16/18	1	Matthew Saunders [2]
	2	Ishan Naik [4]
Girls Singles 16/18	1	Eliza Clamor
	2	Aimee Brown [2]
Boys Doubles 16/18	1	Jacque Anderson [3] + Tate M Fullerton
	2	Ivica Batnozic [1] + Ishan Naik
Girls Doubles 16	1	Eliza Clamor [1] + Amber Lewis
	2	Aimee Brown [2] + Joanna Kim

## PRIMARY AND INTERMEDIATE SCHOOLS TOURNAMENT 2015

### Open Boys Singles (Year 8 and under)

- Jonathan Fall [4]
- James Sim [3]
- Max Dickey [6]
- Sam Allais [7]

### Year 6 and Under Boys Singles

- Jack Loutit [1]
- Jack Chapman [4]
- Christoph Grant [5]
- Jedric Garcia [2]

### Open Girls Singles (Year 8 and Under)

- Ana Finau Tamanika [2]
- Ema Miyaura [1]
- Ke Ren [4]
- Shona Nakano [3]

### Year 6 and Under Girls Singles

- Teinaki Helen William [2]
- Sasha Situe [1]
- Jessica Li [3]
- Kristina Bogomazova [4]

# International Junior Tournaments

## AUCKLAND ITF INDOOR CHAMPIONSHIPS 2015

EVENT	POS.	NAME	COUNTRY
Boys Singles 18	1	Connor Heap	New Zealand
	2	Shao-Min Ko [1]	China
Boys Doubles 18	1	Ajeet Rai [3] + Rob Reynolds	New Zealand
	2	Arthur Lincoln Chau [1] + Shao-Min Ko	Hong Kong/China
Girls Singles 18	1	Violet Apisah [2]	Australia
	2	Michaela Haet [1]	Australia
Girls Doubles 18	1	Stella Cliffe [3] + Ashleigh Harvey	New Zealand
	2	Violet Apisah [2] + Rosie Cheng	Australia/New Zealand

## NZ ITF SUMMER CHAMPIONSHIPS 2016

EVENT	POS.	NAME	COUNTRY
Boys Singles 18	1	Adam Walton [9]	Australia
	2	Christopher Cox [14]	Australia
Boys Doubles 18	1	Ming Chun Alan Sou [1] + Jack Wong	Hong Kong
	2	Finn Reynolds + Macsen Sisam	New Zealand
Girls Singles 18	1	Lea Boskovic [2]	Croatia
	2	Lara Salden [1]	Belgium
Girls Doubles 18	1	Lea Boskovic [1] + Lara Salden	Croatia/Belgium
	2	Baijing Lin [2] + Kaitlin Staines	Australia



# Auckland Schools Tennis

## AUCKLAND SECONDARY SCHOOLS 2016 CHAMPION OF CHAMPIONS TENNIS TOURNAMENT

EVENT	POS.	NAME
Junior Boys Singles	1	Matt Shearer [1]
	2	Sam Hodges [2]
Intermediate Boys Singles	1	Liam Stoica [1]
	2	Adrian Lagman [2]
Senior Boys Singles	1	Heve Kelley [2]
	2	Tim Heslin [5]
Junior Girls Singles	1	Ana Tamanika [2]
	2	Amily Suga [1]
Intermediate Girls Singles	1	Elys Ventura [3]
	2	Paige Alter [2]
Senior Girls Singles	1	Lauren Alter [2]
	2	Brooke Kenny [3]
Junior Boys Doubles	1	Sam Hodges [1] + Daniel Persson
	2	Antonio Escobar-Flaunty [2] + Callum Mackay-Peters
Intermediate Boys Doubles	1	Filipo La Cava [2] + Adrian Lagman
	2	Tate Fullerton [1] + Liam Stoica
Senior Boys Doubles	1	Heve Kelley [1] + Connor Williamson
	2	Kento Suga + Liam Suttie
Junior Girls Doubles	1	Ana Tamanika [1] + Ela Vakaukamea
	2	Charlie Francis + Sylvie Ruahe
Intermediate Girls Doubles	1	Paige Alter + Elys Ventura
	2	Zara Cornwell + Holly Stewart
Senior Girls Doubles	1	Lana Popovich [2] + Shaylee Syme
	2	Lauren Alter [1] + Brooke Kenny



# 2016 Championship Honours

## Senior A1 Tennis

---

### Senior Boys:

- 1st St Kentigern College
- 2nd Auckland Grammar School

### Senior Girls:

- 1st Westlake Girls High School
- 2nd St Kentigern College

## Junior A1 Tennis

---

### Junior Boys:

- 1st St Kentigern College
- 2nd King's College

### Junior Girls:

- 1st St Kentigern College
- 2nd Saint Cuthbert's College

## Intermediate A1 Tennis

---

### Intermediate Boys:

- 1st St Kentigern College
- 2nd Auckland Grammar School

### Intermediate Girls:

- 1st Baradene College
- 2nd Epsom Girls Grammar School



FILIPPO LA CAVA

# Junior National Events

## 2015 New Zealand Junior Championships 18U

EVENT	POS.	NAME
Boys Singles	1	Connor Heap [1]
	2	Rob Reynolds [2]
Girls Singles	1	Rosie Cheng [1]
	2	Ashleigh Harvey [2]
Boys Doubles	1	Connor Heap [1] + Rob Reynolds
	2	Dylan Heap [6] + Liam Stoica
Girls Doubles	1	Rosie Cheng [1] + Ashleigh Harvey
	2	Janvhi Clark [4] + Nina Paripovich

## 2016 New Zealand Junior Championships 16U

EVENT	POS.	NAME
Boys Singles	1	Dylan Heap [2]
	2	Edward Batt [4]
Girls Singles	1	Tamara Anderson [6]
	2	Louise Waite
Boys Doubles	1	Finley Hall [5] + Chris Zhang
	2	Milo Benn [4] + Tim Heslin
Girls Doubles	1	Ashleigh Harvey [1] + Caitlin Ward
	2	Elys Saguil Ventura [6] + Holly Stewart

## 2016 New Zealand Junior Championships 14U

EVENT	POS.	NAME
Boys Singles	1	George Stoupe [1]
	2	Chris Zhang [2]
Girls Singles	1	Holly Stewart [3]
	2	Monique Barry [5]
Boys Doubles	1	William Brownlie [1] + George Stoupe
	2	Reece Falck [2] + Jamie Garbett
Girls Doubles	1	Tharubphet Homkrun [7] + Brooke Kenny
	2	Monique Barry + Ines Stephani

# Junior National Events (Continued)

## 2016 New Zealand Junior Championships 12U

EVENT	POS.	NAME
Boys Singles	1	Corban Crowther [1]
	2	Kevin Fu [2]
Girls Singles	1	Jade Otway [1]
	2	Mia Milojevic [4]
Boys Doubles	1	Corban Crowther [1] + Aulky Wang
	2	Kevin Fu [5] + James Sim
Girls Doubles	1	Jade Otway [1] + Kyla Otway
	2	Shona Nakano [3] + Ke Ren

## 2015 NZ Junior Masters Top 8 Finals

EVENT	POS.	NAME
Boys Singles 12U	1	Kevin Fu [1]
	2	James Sim [4]
	3	Corban Crowther [2]
	4	Thomas Dai
Boys Singles 14U	1	George Stoupe [2]
	2	Chris Zhang [1]
	3	Jamie Garbett [3]
	4	Adrian Lagman [4]
Boys Singles 16U	1	Finn Reynolds [1]
	2	Macsen Sisam [2]
	3	Dylan Heap [3]
	4	Te Kani Williams
Girls Singles 12U	1	Ana Finau Tamanika [1]
	2	Jade Otway [3]
	3	Sadheera Weerapperuma [2]
	4	Tina Marie Li [4]
Girls Singles 14U	1	Tharubphet Homkrun [1]
	2	Holly Stewart [3]
	3	Elys Ventura [2]
	4	Tessa McCann
Girls Singles 16U	1	Lauren Alter [1]
	2	Christy Robinson [2]
	3	Holly Matson [4]
	4	Vera Goesmann [3]



## National Junior Teams Event 2016

### 12U Divison Results

1st	Auckland
2nd	Canterbury
3rd	Northern

### 14U Divison Results

1st	Central
2nd*	Canterbury, Waikato-Bays & Auckland

### 16U Division Results

1st	Waikato-Bays
2nd	Auckland & Central

\*Due to rain affected matches on days 1 & 2, a clear result could not be determined.

## Overall Result - National Junior Teams Event 2016

### 12U points

Auckland	5 points
Central	2 points
Waikato Bays	1 points
Canterbury	4 points
Northern	3 points
Southern	0 points

### 14U points

Auckland	3 points
Central	5 points
Waikato Bays	3 points
Canterbury	3 points
Northern	1 points
Southern	0 points

### 16U points

Auckland	3 points
Central	3 points
Waikato Bays	5 points
Canterbury	2 points
Northern	2 points
Southern	0 points

### Total points

Auckland	11 points
Central	10 points
Waikato Bays	9 points
Canterbury	9 points
Northern	6 points
Southern	0 points

### Overall place

Auckland	1st
Central	2nd
Waikato Bays	3rd
Canterbury	4th
Northern	5th
Southern	6th



# Indoor Competitions

## 2015 Evening Business House

	COMPETITION	WINNER
<b>Term 2</b>	Tuesday A/B Grade Wednesday C Grade Thursday C Grade Thursday D Grade	Masters Macleans Chaingang Orakei Allsorts Old Boys
<b>Term 3</b>	Tuesday A Grade Tuesday B Grade Wednesday C Grade Thursday C Grade Thursday D Grade	Goldina Mission Possible Blue Moon Next Generation OTC Old Fellows

## Wilson Ladies Indoor Tennis

	COMPETITION	WINNER
<b>Singles - Term 2</b>	A Grade B Grade C Grade	Dorota Montenegro Melanie McKenzie Sharon Wong
<b>Doubles - Term 2</b>	Social Grade Tuesday B Grade Wednesday A Grade Friday B Grade	Tennis Girls Pointer Sisters FIGJAM 50/50
<b>Singles - Term 3</b>	A Grade B Grade C Grade	Clair Connor Carolyn Harrison Karolyn Cooper
<b>Doubles - Term 3</b>	Social Grade Tuesday B Grade Wednesday A Grade Friday B Grade	Next Gen Girlies Birdseeds iTeam 50/50
<b>Singles - Term 4</b>	A Grade B&C Grade Combined	Elle Grant Karen Anderson

# Interclub

## SCARBRO CARO BOWL

SCARBRO Caro Bowl Women	Sunnyhills
SCARBRO Caro Bowl Men	Blockhouse Bay
Caro Bowl Reserve Women	Bucklands Beach
Caro Bowl Reserve Men	Next Generation
SCARBRO Junior Caro Bowl Girls	Royal Oak
SCARBRO Junior Caro Bowl Boys	Remuera
Junior Caro Bowl Reserve Girls	Campbell Park
Junior Caro Bowl Reserve Boys	Campbell Park

## 1ST GRADE MEN

Overall	Blockhouse Bay A
Section 1	Mission Bay
Section 2	Blockhouse Bay A

## 1ST GRADE WOMEN

East Tamaki

## 2ND GRADE MEN

Overall	Titirangi
Section 1	Next Generation
Section 2	Titirangi
Section 3	Lynfield
Section 4	Pt Chevalier

## Open Grades

### MEN

Section 1	Mission Bay 1
Section 2	Ngatira
Section 3	Manurewa 1
Section 4	Cockle Bay 1
Section 5	Winstone Park 2
Section 6	Te Atatu 1
Section 7	Cockle Bay 3
Section 8	Bridge Park
Section 9	Royal Oak 4

### WOMEN

Section 1	Jellicoe Park
Section 2	Orakei 1
Section 3	Sunnyside
Section 4	Papakura 1
Section 5	Papakura 2

### PRESIDENTS

Section 1	Koru 2
Section 2	Winstone Park 1
Section 3	Pt Chevalier 1
Section 4	Kohimarama
Section 5	West Harbour
Section 6	Glen Eden

## Super Tennis

### MEN

Mission Bay

### WOMEN

Section 1	Kohimarama 1
Section 2	Papakura 1
Section 3	Sunnyside

## Twilight Interclub

Monday Men's Doubles	Jellicoe Park
Monday Women's Singles	Bridge Park
Tuesday Men's Singles	East Tamaki
Tuesday Women's Doubles	Te Pai Park

## Winter Interclub

### Men's Singles

Section 1	Howick
Section 2	Manurewa
Section 3	Winstone Park

### Women's Singles

Section 1	Mission Bay
Section 2	St Heliers

### Women's Doubles

Section 1	Kohimarama 2
Section 2	Manurewa

### Mixed Doubles

Section 1	Parnell 1
Section 2	Herne Bay
Section 3	Manurewa



SCARBRO CARO BOWL WOMEN'S FINAL 2015

# Midweek Ladies

## Midweek Ladies Lead In Interclub

### Monday

Open 1	Cockle Bay 1
Open 2	Cockle Bay 2
Open 3	Campbell Park 2
Open 4	Campbell Park 3
Open 5	Gladstone Ball Bashers

### Tuesday

Open 1	St Heliers 1
Open 2	Eden Epsom 1
Open 3	Glendowie 2
Open 4	Pakuranga 1
Open 5	Bucklands Beach 4
Open 6	Winstone Park
Open 7	Eden Epsom 3
Open 8	Eden Epsom 4

## Midweek Ladies Summer Interclub

### Monday

Champ 1	Bucklands Beach 1
Champ 2	Karaka 1
Open 1	Dunholme 2
Open 2	Orakei 2
Open 3	Next Generation 2
Open 4	Kohimarama 2

### Tuesday

Champ 1	St Heliers 2
Champ 2	Campbell Park
Open 1	Pakuranga 1
Open 2	Clevedon
Open 3	Gladstone Ball Bashers
Open 4	Sunnyhills 5
Open 5	Gladstone







TENNIS AUSTRALIA 2015/2016 ANNUAL REPORT





# Junior Interclub

## Pre Xmas 2015

### Division

Boys 18's Saturday 1  
Boys 18's Saturday 2  
Boys 16's Saturday 1  
Boys 16's Saturday 2  
Boys 16's Saturday 3  
Boys 14's Saturday 1  
Boys 14's Saturday 2  
Boys 14's Saturday 3  
Boys 14's Saturday 4  
Boys 14's Saturday 5  
Boys 14's Saturday 6  
Boys 12's Saturday 1  
Boys 12's Saturday 2  
Boys 12 & 10's Saturday  
Beginner Boys 13 & 12's Saturday  
Beginner Boys 11 & 10's Saturday  
Girls 18's Saturday 1  
Girls 18's Saturday 2  
Girls 16's Saturday 1  
Girls 16's Saturday 2  
Girls 16's Saturday 3  
Girls 14's Saturday 1

### Winning Team

Bucklands Beach  
Jellicoe Park 2  
Pakuranga  
Sunnyhills  
Te Atatu  
Bucklands Beach 1  
Remuera 1  
Bucklands Beach 3  
Winstone Park 1  
Mission Bay  
Eden Epsom A  
Clevedon 1  
Jellicoe Park  
Otahuhu  
Mt Eden 1  
Bucklands Beach 1  
Jellicoe Park  
Eden Epsom A  
West Harbour 1  
Eden Epsom B  
Bucklands Beach 2  
Bucklands Beach 1

### Division

Girls 14's Saturday 2  
Girls 12's Saturday 1  
Girls 12 & 10's Saturday 1  
Girls 12 & 10's Saturday 2  
Beginner Girls 12, 11 & 10's Saturday  
Boys 18's Sunday 1  
Boys 18's Sunday 2  
Boys 16's Sunday 1  
Boys 16's Sunday 2  
Boys 14's Sunday 1  
Boys 14's Sunday 2  
Boys 14's Sunday 3  
Boys 12's Sunday 1  
Boys 12 & 10's Sunday  
Beginner Boys 13, 12, 11 & 10's Sunday  
Girls 18's Sunday  
Girls 16's Sunday  
Girls 14's Sunday  
Girls 12 & 11's Sunday

### Winning Team

Mission Bay 2  
Bucklands Beach 1  
Bucklans Beach 1  
East Tamaki  
Sunnyhills  
Campbell Park 1  
Pukekohe  
Sunnyhills  
Mangere Combined  
West End 1  
Dunholme 1  
Bridge Park  
Remuera 2  
Blockhouse Bay 2  
Mangere Combined  
Campbell Park 1  
West End 2  
Herne Bay  
West End 1

## Post Xmas 2016

### Division

Boys 18's Saturday Sec 1  
Boys 18's Saturday Sec 2  
Boys 16's Saturday Sec 1  
Boys 16's Saturday Sec 2  
Boys 16's Saturday Sec 3  
Boys 14's Saturday Sec 1  
Boys 14's Saturday Sec 2  
Boys 14's Saturday Sec 3  
Boys 14's Saturday Sec 4  
Boys 14's Saturday Sec 5  
Boys 14's Saturday Sec 6  
Boys 12's Saturday Sec 1  
Boys 12's Saturday Sec 2  
Boys 12's Saturday Sec 3  
Beg Boys 13 & 12's Saturday  
Beg Boys 11 & 10's Saturday Sec 1  
Beg Boys 11 & 10's Saturday Sec 2  
Girls 18's Saturday  
Girls 16's Saturday Sec 1  
Girls 16's Saturday Sec 2  
Girls 14's Saturday Sec 1  
Girls 14's Saturday Sec 2  
Girls 14's Saturday Sec 3

### Winning Team

Campbell Park  
Winstone Park  
West Harbour 1  
Te Atatu  
Cockle Bay  
Bucklands Beach 1  
Sunnyhills 2  
Hunua (AK)  
Orakei  
Kohimarama  
Winstone Park 1  
Blockhouse Bay  
Dunholme  
Pakuranga  
Campbell Park  
Mt Wellington  
New Lynn  
Cockle Bay 1  
West Harbour  
Campbell Park  
Bucklands Beach  
Jellicoe Park  
Eden Epsom

### Division

Girls 12's Saturday Sec 1  
12's Saturday Sec 2  
Girls 12&10's Saturday  
Beg Girls 11's Saturday  
Beg Girls 13 & 12's Saturday  
Boys 18's Sunday Sec 1  
Boys 18's Sunday Sec 2  
Boys 16's Sunday Sec 1  
Boys 16's Sunday Sec 2  
Boys 14's Sunday Sec 1  
Boys 14's Sunday Sec 2  
Boys 14's Sunday Sec 3  
Boys 12's Sunday Sec 1  
Boys 12's Sunday Sec 2  
Beg Boys 11 & 10's Sunday  
Beg Boys 13 & 12's Sunday  
Girls 18's Sunday Sec 1  
Girls 18's Sunday Sec 2  
Girls 16's Sunday  
Girls 14's Sunday Sec 1  
Girls 14's Sunday Sec 2  
Girls 12's Sunday  
Beg Girls 13 & 12 & 10's Sunday

### Winning Team

Campbell Park 2  
Herne Bay 1  
Bridge Park  
Dunholme 2  
Campbell Park  
West End 1  
Pakuranga 2  
Sunnyhills 1  
Campbell Park 2  
Bucklands Beach 1  
Dunholme  
Campbell Park  
Blockhouse Bay 2  
Royal Oak  
Glendowie  
Campbell Park  
West End 1  
Orakei 1  
Bucklands Beach 2  
Mt Eden 1  
Mangere Combined  
Next Generation  
Dunholme



# Corporate Governance

## ROLE OF THE BOARD OF DIRECTORS

---

The Board is responsible for governing Tennis Auckland Region, and carrying out the objectives, responsibilities and obligations as described in the Tennis Auckland Constitution. Generally, the Board's role is to promote, develop, enhance and protect the sport of tennis in the Auckland region. Specific objects and powers are set out in Part 1 of the Constitution.

The Board will govern Tennis Auckland with emphasis on:

- Serving the legitimate collective interest of the primary stakeholders of Tennis Auckland and accounting to them fully for the performance of Tennis Auckland and for the Board's stewardship.
- Remaining up to date in terms of stakeholders concerns, needs and aspirations.
- Developing a future focus.
- Providing leadership in the exploration of strategic issues rather than administrative detail.
- Behaving proactively rather than reacting to events and other's initiatives.
- Bringing a diversity of opinions and views to bear on its deliberations.
- Expressing collective responsibility for all aspects of the Board's performance.
- Continuing the improvement in Board and individual effectiveness, in the interests of Tennis Auckland as a whole.

### Committees

The Board has three standing Committees described below. The Board reviews the performances of the standing committee against written Charters. Each Committee has a specific Charter.

#### 1. Audit Committee

- This Committee comprises three Directors, one of whom is appointed Chair. The Chief Executive and the Finance Manager attend as ex-officio members and the external auditors attend by invitation of the Chair.
- The current Director composition the Committee is Elizabeth Coutts (Chair), Howard Lewis and Amanda Hopkins.
- The Committee met 5 times during this financial period.
- This Committee's Charter states its main objective is to assist the Board in discharging its responsibilities relative to financial and other accounting requirements.

#### 2. Employment Committee

- This Committee comprises three Directors, one of whom is appointed Chair. The Chief Executive attends as an ex-officio member.
- The current Director composition the Committee is John McGill (Chair), Elizabeth Coutts and Clare Morgan.
- The Committee met 3 times during this financial period.
- This Committee's Charter states its role is to review and recommend to the Board on matters pertaining to Health & Safety; and the appointment, remuneration and performance of the Chief Executive and their direct reports.

#### 3. Property Committee

- This Committee comprises three Directors, one of whom is appointed Chair. The Chief Executive and the Tournament Director attend as ex-officio members.
- The current Director composition the Committee is Garry Scarborough (Chair), Simon Vannini and Amanda Hopkins.
- The Committee met 5 times during this financial period.
- This Committee's Charter states its role is to assist the Board in discharging its responsibility in regards to property related matters.



## DIRECTORS' INTERESTS

<b>Name:</b>	<b>Other Interests:</b>	<b>Position:</b>
Simon Vannini	Eden Epsom Tennis Club	Member
	Simpson Grierson*	Partner
	Consensus Nominees Limited	Director
	Hort Nominees Limited	Director
	EIP Fund Management Limited	Director
	Botfield Farms Limited	Director
	Kingtal Nominees Limited	Director
Elizabeth Coutts	EBOS Group Limited	Director
	Skellerup Holdings Limited	Director
	Sanford Limited	Director
	Yellow Pages Group of Companies	Director
	CME Limited	Director
	Ports of Auckland Limited	Chairman
	Oceania Healthcare Limited	Chairman
	Urwin and Company Limited	Chairman
	Marsh NZ Advisory Board**	Board Member
Institute of Directors Inc	Vice President	
Howard Lewis	Mission Bay Tennis Club	Member
	Actrix Networks Limited	CEO
Clare Morgan	Fonterra	Director Marketing
	Kennedy's Limited	Non-Executive Director
Garry Scarborough	Scarbro Holdings (various)	Director
	S&G Concrete Limited	Director
	Complete Painting & Maintenance Services Limited	Director
	Maunga Rei NZ Limited	Director
	Remed Construction Limited	Director
	Marua Developments Limited	Director
	Amanda Hopkins	Cockle Bay Tennis Club
John McGill	Fieldporter Limited	Director
	Glendowie Tennis Club	Member
Tony Gardner	Strategic Pay Limited***	CEO
	Gardner Valuation Limited	Director
	Remuera Racquets Club	Member
	Jubilee Crippled Childrens Trust	Trustee

\*Provides legal services to Tennis Auckland Region Inc.

\*\*Provides insurance services to Tennis Auckland Region Inc.

\*\*\*Provides HR services to Tennis Auckland Region Inc.

Directors were provided with NGC membership for the year.

### Directors Indemnity Insurance

Tennis Auckland Region Inc holds cover for individual Committee members and officers against personal liability for claims for damages made against them arising from the discharge of their duties on behalf of the organisation, provided they are not entitled to be otherwise indemnified.

# Tennis Auckland Region Incorporated

## Financial statements for the year ended 30 June 2016

Statement of comprehensive revenue and expense	51
Statement of financial position	52
Statement of changes in members' equity	53
Statement of cash flows	54
Notes to the financial statements	55
Auditors report	60



# Tennis Auckland Region (Incorporated)

## STATEMENT OF COMPREHENSIVE REVENUE AND EXPENSE FOR THE YEAR ENDED 30 JUNE 2016

in New Zealand Dollars

	Note	2016	2015 (restated)*
<b>REVENUE</b>		<b>\$</b>	<b>\$</b>
Events and tournaments		4,051,735	3,641,740
Sponsorship		2,622,927	2,006,756
Affiliation fees		338,897	348,781
Facilities		526,360	468,446
Other income		206,379	295,881
Grants (non-exchange transactions)		257,352	192,772
Coaching		143,843	144,414
Interest		68,193	59,176
<b>Total revenue</b>		<b>8,215,686</b>	<b>7,157,966</b>
<b>Expenditure</b>			
Events and tournaments		(4,395,918)	(3,369,499)
Administration		(1,828,843)	(1,730,177)
Facilities		(539,220)	(442,530)
Depreciation	2	(363,326)	(412,618)
Affiliation fees		(209,894)	(233,725)
Coaching		(74,448)	(109,925)
<b>Total expenditure</b>		<b>(7,411,649)</b>	<b>(6,298,474)</b>
<b>Operating surplus for the year</b>		<b>804,037</b>	<b>859,492</b>
Foreign exchange (loss) / gain	8,11	(154,462)	466,853
<b>Surplus for the year</b>		<b>649,575</b>	<b>1,326,345</b>
Other comprehensive revenue and expense		-	-
<b>Total comprehensive revenue and expense</b>		<b>649,575</b>	<b>1,326,345</b>

\* Restated to comply with PBE Accounting Standards Not-For-Profit Tier 2 as detailed in Note 1 and Note 11.

This statement is to be read in conjunction with the notes to the financial statements.

# Tennis Auckland Region (Incorporated)

## STATEMENT OF FINANCIAL POSITION AS AT 30 JUNE 2016

in New Zealand Dollars

	Note	2016	2015
			(restated)*
		\$	\$
<b>ASSETS</b>			
Cash and bank balances	3	2,798,889	1,935,591
Accounts receivable and prepayments	6	146,054	395,730
Foreign exchange contracts	8	78,842	170,393
<b>TOTAL CURRENT ASSETS</b>		<b>3,023,785</b>	<b>2,501,714</b>
Property, plant and equipment	2	12,953,413	12,674,957
Foreign exchange contracts	8	-	150,579
<b>TOTAL NON CURRENT ASSETS</b>		<b>12,953,413</b>	<b>12,825,536</b>
<b>TOTAL ASSETS</b>		<b>15,977,198</b>	<b>15,327,250</b>
<b>LIABILITIES</b>			
Accounts payable and accruals	7	486,665	348,786
Income received in advance	5	324,551	217,965
Bank mortgage	4	139,737	120,652
<b>TOTAL CURRENT LIABILITIES</b>		<b>950,953</b>	<b>687,403</b>
Bank mortgage	4	1,261,004	1,412,618
Income received in advance	5	600,000	767,339
Foreign exchange contracts	8	55,781	-
<b>TOTAL NON-CURRENT LIABILITIES</b>		<b>1,916,785</b>	<b>2,179,957</b>
<b>TOTAL LIABILITIES</b>		<b>2,867,738</b>	<b>2,867,360</b>
<b>NET ASSETS</b>		<b>13,109,462</b>	<b>12,459,887</b>
<b>MEMBERS' EQUITY</b>			
Retained earnings		13,109,462	12,459,887

For and on behalf of TENNIS AUCKLAND REGION (Incorporated)




Dated: 26 August 2016

Dated: 26 August 2016

\* Restated to comply with PBE Accounting Standards Not-For-Profit Tier 2 as detailed in Note 1 and Note 11.

This statement is to be read in conjunction with the notes to the financial statements.



# Tennis Auckland Region (Incorporated)

## STATEMENT OF CHANGES IN MEMBERS' EQUITY FOR THE YEAR ENDED 30 JUNE 2016

in New Zealand Dollars	Note	Retained earnings	Total members' equity
		\$	\$
<b>Balance at 1 July 2014 (restated)*</b>	11	<b>11,133,542</b>	<b>11,133,542</b>
Surplus for the year (restated)	11	1,326,345	1,326,345
Other comprehensive revenue and expense		-	-
<b>BALANCE AT 30 JUNE 2015 (RESTATED)*</b>		<b>12,459,887</b>	<b>12,459,887</b>
<b>BALANCE AT 1 JULY 2015 (RESTATED)*</b>	11	<b>12,459,887</b>	<b>12,459,887</b>
Surplus for the year		649,575	649,575
Other comprehensive revenue and expense		-	-
<b>BALANCE AT 30 JUNE 2016</b>		<b>13,109,462</b>	<b>13,109,462</b>

\* Restated to comply with PBE Accounting Standards Not-For-Profit Tier 2 as detailed in Note 1 and Note 11.

This statement is to be read in conjunction with the notes to the financial statements.

# Tennis Auckland Region (Incorporated)

## STATEMENT OF CASH FLOWS FOR THE YEAR ENDED 30 JUNE 2016

in New Zealand Dollars	2016	2015
	\$	\$
Receipts from exchange transactions	8,077,619	6,700,328
Receipts from non exchange transactions	257,352	217,772
Interest received	68,193	59,176
Cash paid to suppliers, employees and others	(6,838,740)	(5,744,169)
Interest paid	(86,803)	(108,569)
<b>NET CASH FLOWS FROM OPERATING ACTIVITIES</b>	<b>1,477,621</b>	<b>1,124,538</b>
Acquisition of property, plant and equipment	641,783	225,513
<b>NET CASH FLOWS FROM INVESTING ACTIVITIES</b>	<b>641,783</b>	<b>225,513</b>
Proceeds from borrowings	132,529	119,729
<b>NET CASH FLOWS FROM FINANCING ACTIVITIES</b>	<b>132,529</b>	<b>119,729</b>
<b>Net increase/(decrease) in cash held</b>	<b>703,309</b>	<b>779,296</b>
Cash at the beginning of the year	1,935,592	1,156,296
Add effect of exchange rates change on foreign currency balance	159,989	-
<b>CASH AT THE END OF THE YEAR</b>	<b>2,798,889</b>	<b>1,935,592</b>

This statement is to be read in conjunction with the notes to the financial statements.

# Tennis Auckland Region (Incorporated)

## NOTES TO THE FINANCIAL STATEMENTS FOR THE PERIOD ENDED 30 JUNE 2016

### 1 OVERVIEW

#### a Reporting Entity

Tennis Auckland Region Incorporated (Tennis Auckland) is an incorporated society registered under the Incorporated Societies Act 1908 and the Charities Act 2005. The financial statements have been prepared in accordance with the requirements of those Acts. For the purposes of financial reporting, Tennis Auckland is a public benefit entity (not-for-profit).

The financial statements and the accompanying notes summarise the financial results of activities carried out by Tennis Auckland. The purpose of Tennis Auckland is to advance the sport of tennis in the Auckland region by enabling rewarding tennis opportunities for everyone on a sustainable basis.

The financial statements for Tennis Auckland are for the year ended 30 June 2016. The financial statements were authorised for issue by the board of directors on the date recorded on page 48.

#### b Basis of preparation

The financial statements have been prepared in accordance with New Zealand Generally Accepted Accounting Practice ("NZ GAAP"). For the purposes of financial reporting they comply with PBE Accounting Standards Not-For-Profit and Tier 2 reduced disclosure concessions have been applied.

The entity has elected to report in accordance with PBE Accounting Standards Not-For-Profit Tier 2 on the basis that it does not have public accountability and has total annual expenses of less than \$30 million.

These are Tennis Auckland's first financial statements prepared in accordance with PBE Accounting Standards Tier 2 and PBE FRS 47 First-time Adoption of PBE Standards by Entities Other Than Those Previously Applying NZ IFRSs has been applied. An explanation of how the transition to PBE Accounting Standards Tier 2 has affected the reported equity of Tennis Auckland is provided in Note 11.

Tennis Auckland has early adopted the Disclosure Initiative (Amendments to PBE IPSAS 1). This has resulted in a number of changes to the format and presentation of the financial statements designed to enhance reader comprehension and disclosure effectiveness.

The financial statements have been prepared on the historical cost and accrual basis. The statement of cash flows has been prepared using the direct method.

The financial statements are presented in New Zealand Dollars (\$), which is Tennis Auckland's functional currency. All financial information presented in New Zealand Dollars has been rounded to the nearest dollar, except when otherwise indicated.

The accounting policies have been applied in preparing the financial statements for the year ended 30 June 2016 and in the preparation of the opening PBE standards statement of financial position at 1 July 2014 (Tennis Auckland's date of transition).

#### c Use of estimates and judgements

The preparation of the financial statements in conformity with PBE Accounting Standards Tier 2 requires management to make judgements, estimates and assumptions that affect the application of accounting policies and the reported amounts of assets, liabilities, income and expenses. Actual results may differ from these estimates. Key estimates and assumptions are used in the preparation of these financial statements are:

- the fair value of foreign exchange contracts based on external mark to market valuations.
- useful lives of items of property plant and equipment

Estimates and underlying assumptions are reviewed on an ongoing basis. Revisions to accounting estimates are recognised in the period in which the estimates are revised and in any future periods affected.

#### d Taxes

Tennis Auckland is a registered charitable organisation and is therefore exempt from income tax under Income Tax Act 2007. All amounts are shown exclusive of Goods and Services Tax (GST), except for receivables and payables that are stated inclusive of GST.

#### e Foreign exchange

Transactions in foreign currencies are translated into New Zealand dollars (functional currency) at spot exchange rates at the dates of the transactions. Monetary assets and liabilities denominated in foreign currencies at the reporting date are translated to New Zealand dollars at the exchange rate at that date. The foreign currency gain or loss on monetary items is recognised in revenue or expenses as part of the surplus or deficit.

#### f Revenue

Revenue from exchange transactions is recognised to the extent that it is probable that the economic benefit will flow to Tennis Auckland and revenue can be reliably measured. Revenue is measured at the fair value of the consideration received.

Interest income is accrued and dividends or similar distributions shall be recognised when Tennis Auckland's right to receive payment is established.

Grants are classified as non-exchange transactions. Revenue from non-exchange transactions is generally recognised in full on receipt. In some cases non-exchange transactions contain a requirement that will result in the repayment of the amount if certain conditions are not met. In these cases Tennis Auckland recognises a liability for deferred income and revenue is recognised once these conditions have been satisfied.

# Tennis Auckland Region (Incorporated)

## NOTES TO THE FINANCIAL STATEMENTS FOR THE PERIOD ENDED 30 JUNE 2016

### g ASB Tennis Arena Redevelopment Work in Progress

A major development project is underway for the ASB Tennis Arena. This involves demolishing and replacing stands and amenities and putting a retractable roof over the centre court, to enable events to take place in all weather conditions. This work is essential to future proof the venue's ability to host the ASB Classic.

The costs relating to this project have been capitalised as Work in Progress in note 2. These costs will be transferred to buildings and improvements and depreciated once the redevelopment project is complete. No impairment of the existing stadium assets in property, plant and equipment has been taken in the financial statements as demolition of the project has not yet formally commenced.

## 2 PROPERTY, PLANT AND EQUIPMENT

Property, plant and equipment is stated at cost, less accumulated depreciation and impairment losses. Cost includes expenditure that is directly attributable to the acquisition of the items. Where an asset is acquired in a non-exchange transition for nil or nominal consideration the asset is initially measured at its fair value. Any gain or loss on disposal of an item of property plant and equipment is recognised in surplus or deficit.

Subsequent expenditure is capitalised only if it is probable that the future economic benefits associated with the expenditure will flow to Tennis Auckland. All other repairs and maintenance costs are recognised in surplus or deficit as incurred.

At each balance date the carrying amounts of items of property plant and equipment are assessed to determine whether there is any indication of impairment. If any such indication exists, the asset's recoverable amount is estimated. An impairment loss is recognised whenever the carrying amount of an asset exceeds its recoverable amount. Impairment losses directly reduce the carrying amount of the assets and are recognised in surplus or deficit.

On transition to the PBE standards Tennis Auckland has elected to measure the ASB Tennis Arena, Scarbro Tennis Centre, Manukau Tennis Centre and Nicholson Park at 'deemed cost'. This is based on a previous valuation undertaken by Seagar & Partners on 30 April 2012. On transition the previous revaluation reserve was reclassified into retained earnings.

The latest indemnity value for these properties was \$13,790,000 as provided by the Seagar & Partners valuation dated 10 May 2016.

Depreciation is charged on a straight line basis on all property, plant and equipment over the estimated useful life of the asset. Land is not depreciated. The assets residual values and useful lives are reviewed, and adjusted prospectively, if appropriate, at the end of each reporting period. The following depreciation rates have been applied:

Buildings & Improvements	2% to 10%
Equipment, Fixtures & Fittings	25% to 40%
Work in Progress	0%

	Land	Buildings & Improvements	Equipment, Fixtures & Fittings	Work in Progress	Total
	\$	\$	\$	\$	\$
<b>Cost</b>					
<b>Balance as at 30 June 2015</b>	1,707,000	19,140,710	731,359	226,864	21,805,933
Additions	-	92,199	43,652	511,700	647,551
Disposals	-	-	(190,017)	-	(190,017)
<b>Balance as at 30 June 2016</b>	<b>1,707,000</b>	<b>19,232,909</b>	<b>584,994</b>	<b>738,564</b>	<b>22,263,467</b>
<b>Depreciation and impairment</b>					
<b>Balance as at 30 June 2015</b>	-	8,455,214	675,762	-	9,130,976
Depreciation	-	318,265	50,829	-	369,094
Disposals	-	-	(190,017)	-	(190,017)
<b>Balance as at 30 June 2016</b>	-	<b>8,773,480</b>	<b>536,574</b>	-	<b>9,310,054</b>
<b>Net book values</b>					
Balance as at 30 June 2015	<b>1,707,000</b>	<b>10,685,496</b>	<b>55,597</b>	<b>226,864</b>	<b>12,674,957</b>
Balance as at 30 June 2016	<b>1,707,000</b>	<b>10,459,429</b>	<b>48,420</b>	<b>738,564</b>	<b>12,953,413</b>



# Tennis Auckland Region (Incorporated)

## NOTES TO THE FINANCIAL STATEMENTS FOR THE PERIOD ENDED 30 JUNE 2016

### 3 CASH AND BANK BALANCES

Cash and bank balances comprise cash on hand and cash at bank, deposits on call and highly liquid investments with an original maturity of three months or less.

	2016	2015
	\$	\$
Short term deposits	1,500,000	1,634,727
ASB current & credit card accounts & bartercard	591,098	173,227
ASB foreign currency accounts	706,891	127,112
Cash float	900	525
<b>Total</b>	<b>2,798,889</b>	<b>1,935,591</b>

### 4 BANK MORTGAGE

The ASB Bank mortgage is classified as a financial liability and is measured at amortised cost. The loan is secured over the land and buildings of Tennis Auckland. This is a 10 year loan with a final repayment date in June 2024, and is subject to interest and principal repayments. There is a right to make lump sum repayments of the principal. Tennis Auckland has complied with all its banking covenants.

	2016	2015
Rate	5.50%	6.37%
	\$	\$
Current	139,737	120,652
Term	1,261,004	1,412,618
<b>Total</b>	<b>1,400,741</b>	<b>1,533,270</b>

### 5 INCOME IN ADVANCE

Income received (a) in advance for the naming rights of the ASB Tennis Arena and (b) for the purchase of 5 year seats (c) grant revenue received where not all conditions of expenditure have not yet been met. This will be apportioned to each year's income on a straight line basis over the period of the agreement or, in the case of grant revenue, when the conditions of the grant have been satisfied.

	2016	2015
	\$	\$
Current	324,551	217,965
Term	600,000	767,339
<b>Total</b>	<b>924,551</b>	<b>985,304</b>

### 6 ACCOUNTS RECEIVABLE AND PREPAYMENTS

Accounts receivable are recognised at original invoice amount less any allowance for any uncollectable amounts. Bad debts are written off when identified and recognised in the statement of comprehensive revenue and expenses.

	2016	2015
	\$	\$
Debtors	95,369	319,927
Prepayments	48,342	72,016
Stock	2,343	3,787
<b>Total</b>	<b>146,054</b>	<b>395,730</b>

# Tennis Auckland Region (Incorporated)

## NOTES TO THE FINANCIAL STATEMENTS FOR THE PERIOD ENDED 30 JUNE 2016

### 7 ACCOUNTS PAYABLE AND ACCRUALS

Accounts payable and accruals represent liabilities for goods and services provided to Tennis Auckland which have not been paid at the end of the financial year. These amounts are usually settled within 30 days. Liability for wages and salaries including annual leave are recognised in accruals in respect of employees services.

	2016	2015
	\$	\$
Creditors	107,933	125,912
Payable and accruals	370,001	211,057
GST	8,731	11,817
	<b>486,665</b>	<b>348,786</b>

### 8 FOREIGN EXCHANGE CONTRACTS

Tennis Auckland manages its foreign currency exposures for costs relating to the ASB Classic by taking out forward foreign currency contracts. At balance date there are two forward USD exchange contracts in place with the ASB Bank, maturing in January 2017 and January 2018. These are derivative financial instruments and are recognised at fair value on the balance sheet with gains and losses recognised through surplus or deficit. The mark to market valuation report for these contracts is provided by ASB Bank.

	2016	2015 (restated)
	\$	\$
Foreign forward exchange contracts - current	78,842	170,393
Foreign forward exchange contracts - non-current	(55,781)	150,579
	<b>23,061</b>	<b>320,972</b>

### 9 COMMITMENTS

Tennis Auckland has operating commitments to lease land and motor vehicles. The current year's portion has been expensed. Lease payments made are recognised over the term of the lease.

Tennis Auckland leases the land situated on the corner of Stanley Street and Domain Drive. The commencement date of the agreement was 09 September 2011. The initial term of the agreement is for 35 years with an optional extended expiry date not more than 50 years from the commencement date of the lease. The rent payments under the lease agreement are subject to CPI adjustments.

There are no capital commitments entered into as at 30 June 2016 (2015: Nil).

	2016	2015
	\$	\$
Not later than one year	107,940	85,377
Later than one year and not later than five years	232,539	236,378
Later than five years	662,044	679,391
<b>Minimum lease payments</b>	<b>1,002,523</b>	<b>1,001,145</b>

### 10 CONTINGENCIES

There are no contingent liabilities (2015: Nil).

# Tennis Auckland Region (Incorporated)

## NOTES TO THE FINANCIAL STATEMENTS FOR THE PERIOD ENDED 30 JUNE 2016

### 11 TRANSITION TO PBE STANDARDS

These are Tennis Auckland's first financial statements prepared in accordance with PBE Standards. Tennis Auckland previously prepared financial statements under Financial Reporting Standards (FRS) as set out in Note 1 of the 2015 financial statements.

The accounting policies have been applied in preparing the financial statements for the year ended 30 June 2016, the comparatives for 30 June 2015 and in the preparation of an opening PBE Standards Statement of financial position as at 1 July 2014 (Tennis Auckland's date of transition and comparatives).

In preparing its opening PBE Standards statement of financial position, Tennis Auckland has adjusted amounts reported previously or in financial statements prepared in accordance with the previous basis of accounting.

#### a Reconciliation of equity as at 1 July 2014

	1 July 2014	30 June 2015
	\$	\$
Total equity - previous basis of accounting	12,716,867	13,559,630
Adjustment to book foreign forward exchange contract	i (112,942)	320,971
De-recognition of intangible asset for leasehold interest in land	ii (1,470,383)	(1,420,713)
<b>Total equity - PBE standards</b>	<b>11,133,542</b>	<b>12,459,889</b>

#### b Reconciliation of comprehensive revenue and expense for the year ended 30 June 2015

	30 June 2015
	\$
Net surplus for the year - previous basis of accounting	842,764
Adjustment to book foreign forward exchange contract	i 433,913
De-recognition of amortisation for leasehold interest in land	ii 49,669
<b>Total comprehensive revenue and expense for the year - PBE standards</b>	<b>1,326,347</b>

#### c Notes to the reconciliation

##### Foreign exchange contracts

- Prior to adopting PBE Standards, Tennis Auckland did not have an explicit accounting policy relating to the recognition of foreign exchange contracts, and as such, the mark to market valuation of the financial assets were not presented on the balance sheet.

##### De-recognition of intangible asset for leasehold interest in land

- Tennis Auckland had previously recognised an intangible asset for the fair value of its interest in leasehold land which was identified as a separate part of the valuation of the land and buildings undertaken by Seagar and Partners in 2012. This does not meet the criteria for recognition of an asset under the PBE Standards and consequently the asset and associated amortisation has been derecognised on transition.

# Independent Auditor's Report



## Independent auditor's report

### To the directors of Tennis Auckland Region Incorporated

We have audited the accompanying financial statements of Tennis Auckland Region Incorporated ("the incorporated society") on pages 3 to 12. The financial statements comprise the statement of financial position as at 30 June 2016, the statements of comprehensive revenue and expenses, changes in members equity and cash flows for the year then ended, and a summary of significant accounting policies and other explanatory information.

This report is made solely to the directors as a body. Our audit work has been undertaken so that we might state to the incorporated society's directors those matters we are required to state to them in the auditor's report and for no other purpose. To the fullest extent permitted by law, we do not accept or assume responsibility to anyone other than the incorporated society's directors as a body, for our audit work, this report or any of the opinions we have formed.

#### *Directors' responsibility for the financial statements*

The directors are responsible for the preparation and fair presentation of the financial statements in accordance with generally accepted accounting practice in New Zealand (being Public Benefit Entity Standards Reduced Disclosure Regime (Not-For-Profit)) and for such internal control as the directors determines is necessary to enable the preparation of financial statements that are free from material misstatement whether due to fraud or error.

#### *Auditor's responsibility*

Our responsibility is to express an opinion on these financial statements based on our audit. We conducted our audit in accordance with International Standards on Auditing (New Zealand). Those standards require that we comply with ethical requirements and plan and perform the audit to obtain reasonable assurance about whether the financial statements are free from material misstatement.

An audit involves performing procedures to obtain audit evidence about the amounts and disclosures in the financial statements. The procedures selected depend on the auditor's judgement, including the assessment of the risks of material misstatement of the financial statements, whether due to fraud or error. In making those risk assessments, the auditor considers internal control relevant to the incorporated society's preparation and fair presentation of the financial statements in order to design audit procedures that are appropriate in the circumstances, but not for the purpose of expressing an opinion on the effectiveness of the incorporated society's internal control. An audit also includes evaluating the appropriateness of accounting policies used and the reasonableness of accounting estimates, as well as evaluating the presentation of the financial statements.

We believe that the audit evidence we have obtained is sufficient and appropriate to provide a basis for our audit opinion.

Our firm has also provided other services to the incorporated society in relation to accounting advisory work. Subject to certain restrictions, partners and employees of our firm may also deal with the incorporated society on normal terms within the ordinary course of trading activities of the business of the incorporated society. These matters have not impaired our independence as auditor of the incorporated society. The firm has no other relationship with, or interest in, the incorporated society.

#### *Opinion*

In our opinion, the financial statements on pages 51 to 59 comply with generally accepted accounting practice in New Zealand and present fairly, in all material respects, the financial position of Tennis Auckland Region Incorporated as at 30 June 2016 and its financial performance and cash flows for the year then ended in accordance with Public Benefit Entity Standards Reduced Disclosure Regime (Not-For-Profit).

30 August 2016  
Auckland





# ASB CLASSIC





**TENNIS AUCKLAND**

69 Merton Road, St Johns 1072

Phone: 09 373 3623

Email: [info@tennisackland.co.nz](mailto:info@tennisackland.co.nz)

[www.tennisackland.co.nz](http://www.tennisackland.co.nz)